



1 9 4 3

# Rosennial<sup>\*</sup>

NEWS AND VIEWS OF NEWCASTLE HIGH SCHOOL



« « *The Class Of 1943 Presents*



*New Castle High School*



15-  
B101

*In Pictures And Story*



*In War - Time Formation » »*









## *News At New Castle*

WITH SPECIAL EMPHASIS ON THE NEW INCIDENTS AND INDIVIDUALS THAT MADE OUR YEAR SO WORTH RECORDING, BUT WITHOUT FORGETTING THE EVENTS BOTH LARGE AND SMALL, THAT CHARACTERIZE EVERY YEAR AT NEW CASTLE HIGH SCHOOL IN NEW CASTLE, INDIANA.

*THE ROSENNIAL OF FORTY-THREE*





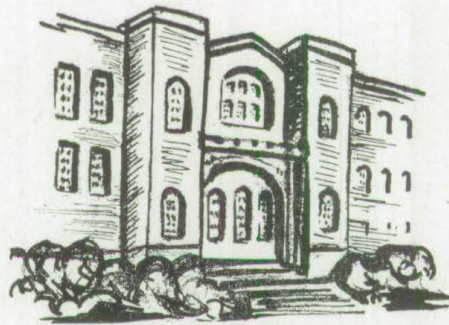




## *1000 Characters in Search of an Education*

. . . are the people of our news story — the people who attend classes, go to ball games, study in the library, work in the stores, play in the band, and do the thousand-and-one things that make up an education in a typical American High School.





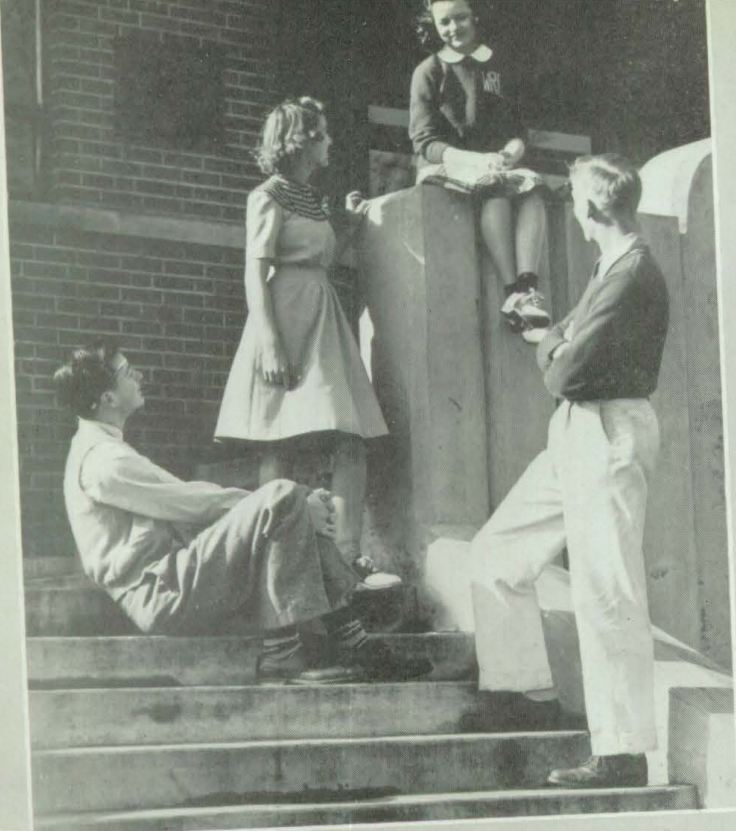
## *Scene of Our News Story*

is the 70 room building where we meet our friends and teachers, argue about who played the best ball game and how the peace will be settled, walk the halls, and plan the future. It is the building which we have come to place next to home and church.









# *Briefly Told -*

## *Classes . .*

Freshmen, sophomores, juniors, — all climb the stairs of N. H. S. and, at the top, find themselves — seniors!



## *Faculty . .*

Despite all supposition, faculty members are people — real people. We salute them and their profession as they help us on our way up the ladder.



## *Activities . .*

Clubs, Phoenix staff, class play, Rosennial staff, and all the other activities give us the chance to enjoy ourselves and put our knowledge into practice.



# *Here Is Our News Story of '43*

## *Athletics . .*

Presenting the wizards of the "N" fraternity, their coaches, and those who strive to become first team players.



## *Features . .*

Varied interests of students in their leisure time; and the greatest feature in our lives this year, what we are doing to aid our Uncle Sam.











## *World News Dominated Our Year*

While we studied of peace and progress we were ever watchful of the news of a world at war. This news changed our studies and our activities.

*First We Record War Changes At N. C. H. S.*





### *"'Tenshun!"*

Future soldiers and sailors fall in as "Griz" Baker, acting sergeant, barks out a command. This is one of the new classes created to prepare boys for the armed services.

### *"Air Raid Wardens, To Your Posts"*

Intermittent, piercing blasts of the siren denote an air raid drill. Students file out of classrooms and study halls to take their places at the assigned stations along the corridors. Even before the students reach their stations, the air raid wardens are at their posts, directing classes, ready and able to take care of any injured person if the raid were staged by real bombers. This body, under the direction of Miss Pinnick, has done much to make our drills successful and to prepare us, just in case.



BOTTOM ROW: Barbara Kaye, Betty Hendricks, Maxine Carter, Betty Johnson, Olga Barnes.

Row 2: Jane Durrell, Mary Lee Edwards, Mary Carnes, Ruth Utt, Martha Ashby.

Row 3: Mildred Chesner, Kathryn Caron, Donna Tower, Barbara Moore, Marjorie Stewart.

Row 4: Dale Stoops, Tommy Irelan, Gerald Gernstein, John Doyle.

Row 5: Robert Fulton, Leland Atkinson, William Bryant, Max McShurley.

TOP ROW: William Burk, Max Elliott.





## *World News Dominated Our Year*

While we studied of peace and progress we were ever watchful of the news of a world at war. This news changed our studies and our activities.

*First We Record War Changes At N. C. H. S.*



### *C. A. P. C. Acquaints Students With Civil Air Patrol*

Following a course of study laid out by the government, the Civil Air Patrol Cadets are helping in our defense effort by preparing for future service. Sunday finds them drilling at the air port and studying chemical warfare, first aid, and other subjects which the Civil Air Patrol headquarters requires. After preliminary study, they take to the air to put into practice what they have learned.

BOTTOM ROW: Wilbur Stairs, Marvin Frary, Joy Davis, Rilla Millikan, Mary Alice Townsend, Wilma Pollitt.

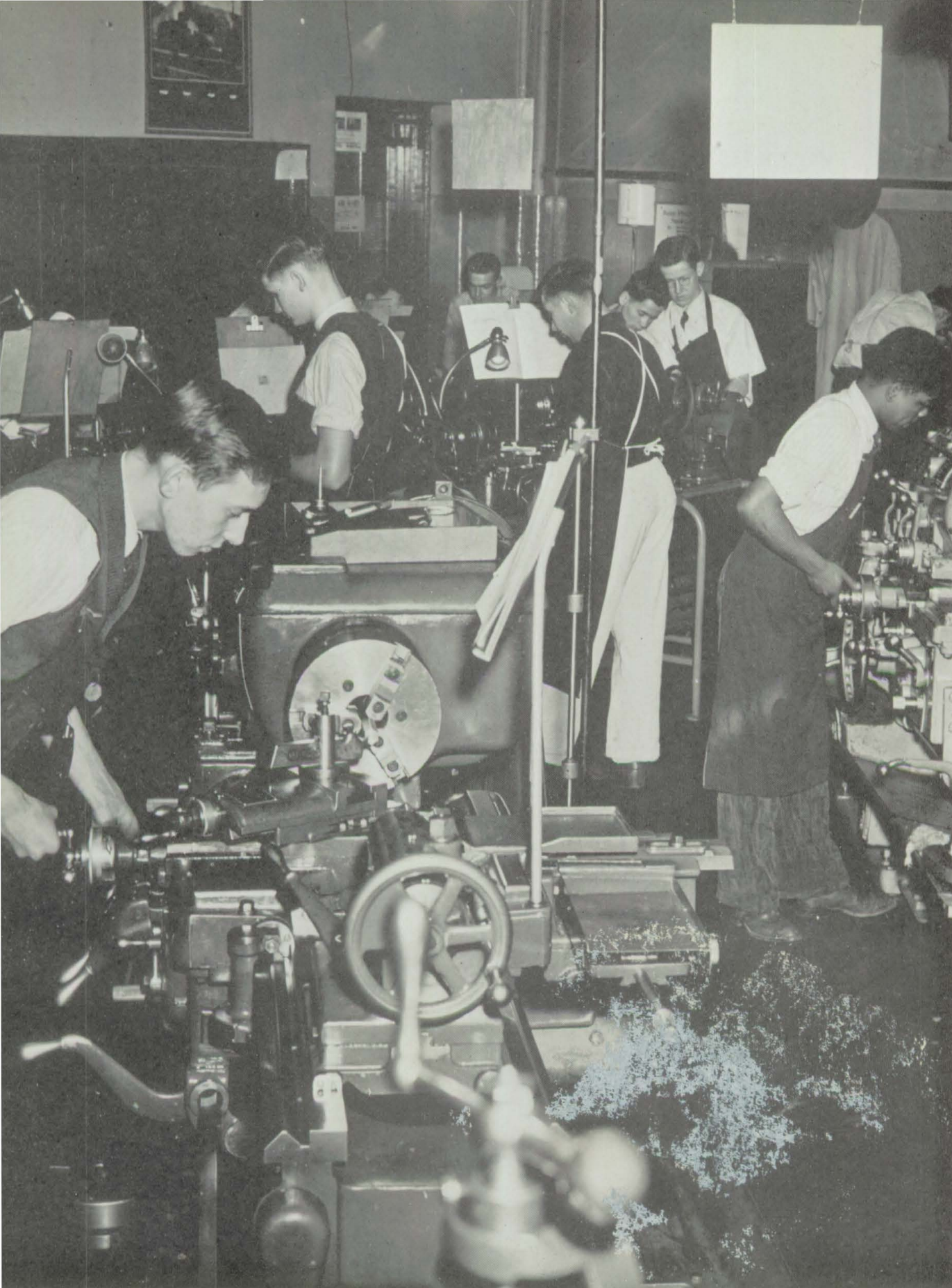
TOP ROW: James Lunsford, George Klotsch, Jack Crow, James Craig, Jean Hicks, Francis Pollitt, Gene Witt, Robert Shaffer, Vernon Guinn, Henry Covert, James Stonerock, Herbert Shelley, Richard Evans, Paul Ellis, Floyd Mastin.



### *Drafting Fits Boys For Wartime Needs*

Receiving training in drafting and blueprint reading, these boys are preparing for wartime industrial needs.





### *New Emphasis Placed On Machine Shop*

Our future machinists work together to insure victory today, while preparing for tomorrow's responsibilities.





### *"'Tenshun!"*

Future soldiers and sailors fall in as "Griz" Baker, acting sergeant, barks out a command. This is one of the new classes created to prepare boys for the armed services.

### *"Air Raid Wardens, To Your Posts"*

Intermittent, piercing blasts of the siren denote an air raid drill. Students file out of classrooms and study halls to take their places at the assigned stations along the corridors. Even before the students reach their stations, the air raid wardens are at their posts, directing classes, ready and able to take care of any injured person if the raid were staged by real bombers. This body, under the direction of Miss Pinnick, has done much to make our drills successful and to prepare us, just in case.



BOTTOM ROW: Barbara Kaye, Betty Hendricks, Maxine Carter, Betty Johnson, Olga Barnes.

Row 2: Jane Durrell, Mary Lee Edwards, Mary Carnes, Ruth Utt, Martha Ashby.

Row 3: Mildred Chesner, Kathryn Caron, Donna Tower, Barbara Moore, Marjorie Stewart.

Row 4: Dale Stoops, Tommy Irelan, Gerald Gernstein, John Doyle.

Row 5: Robert Fulton, Leland Atkinson, William Bryant, Max McShurley.

TOP ROW: William Burk, Max Elliott.



## *Students Prepare For Vital Positions*

To find what background students needed to prepare them for vital positions after graduation, juniors and seniors were given a series of tests.

Math refresher, taught by Miss Orr, and nurses' chemistry, offered by Mr. Bronson, guarantee to future service men and women and to future nurses some knowledge of and preparation for their jobs.









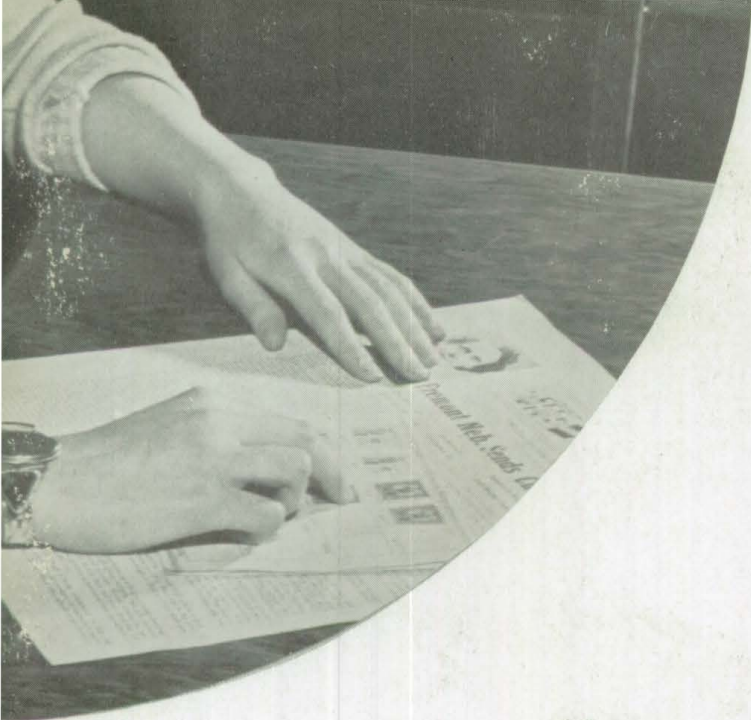
## *Students Prepare For Vital Positions*

To find what background students needed to prepare them for vital positions after graduation, juniors and seniors were given a series of tests.

Math refresher, taught by Miss Orr, and nurses' chemistry, offered by Mr. Bronson, guarantee to future service men and women and to future nurses some knowledge of and preparation for their jobs.







### *Troy Accepts Fremont's Challenge*

To increase student participation in our most important defense task, the buying of stamps and bonds, New Castle accepted Fremont, Nebraska's, challenge to buy more bonds. In two months' time students purchased \$6,058.29 worth of victory!

### *Speakers' Bureau Publicizes Important Events*

Publicity agent for the important events about school is the Speakers' Bureau. Among other activities, they entertain local clubs, send speakers out-of-town, and sponsor such worth-while projects as the Red Cross Drive, which was so successful this year.

### *McGradys Out-Salvage Competitors*

We scoured our homes from attic to cellar, dug out the old hoes and our lucky horseshoes; but the McGradys, Jim and John, out-salvaged us all. Room 300 carried off the honors as the scrappiest home room.







*Our girls go all-out for physical fitness, as new physical education program includes all juniors and seniors.*









## *News of the Faculty . .*

With a brand new, grand new principal, several new teachers, and many of our former teachers, the faculty began the eventful year of 1942-43. In spite of new duties, larger classes, a different system, and many new rules, they are still teaching, befriending, and advising us students.

To you, faculty, the seniors extend their sincerest appreciation for a happy and helpful four years at N. H. S





R. H. VALENTINE, Superintendent



JOE E. CRAW, Principal

## *What a Strange School Year!*

Never before have you attended school while your country was at war. It is an experience you will never forget, also one you did not desire. Everyone seems jittery. College plans, careers, ambitions you have dreamed about seem to be all in a whirl. Planning for the future seems so useless and out of place. What's the use! Everything we do will be upset! Nothing will work out as we planned it!

May I, being older and more experienced, suggest a word of caution at this point? This war will be over some good day before long —

soon, we hope. Each of you — in spite of the war — should go on with your dreams of things to do. You may have to modify some of these — some of them may be shattered beyond repair — but go on dreaming and planning and working to make your ambitions become realities. Because “there are such things” — dreams can be made to come true. And with dreams, too, this fact always holds good. Other things being equal, the individual will go further — come nearer realizing his dreams — who has the better training.

R. H. VALENTINE



# *To Seniors of 1943*

Yesterday, today, and tomorrow — with today, opening doors from the small, narrow stage of high school life into the realities of an odd world. The reception into that world of tomorrow will be just as interesting and as fascinating as you make it. If you approach that step with a careless, indifferent, "don't care" attitude, your reception will be of that same type with dark skies, cruel people, and an uncertain future. Your yesterdays were vainly spent, but your approach can be definitely constructive and vital. Therefore, your yesterdays were constructive and dynamic.

The mental attitude of all of us now is very important in our world. If we harbor fears,

hates, injustices, misunderstandings, and suspicions, we normally isolate ourselves from the world. We dare not withdraw from the world, but we must take our rightful place of privilege and responsibility to help keep a peaceful balance. If through faith we trust, believe in, and serve humanity of all races, and all beliefs, then our position will be one of usefulness and prestige. We cannot camouflage what we really are in a world of positive reality.

To each graduate, I say, prepare, be urgent, but patient, and discipline yourself to rise above the common life. Time is your benefactor, and God is your protector. Through faith we rise to live.

JOE R. CRAW



C. C. BITLER, M. D.  
*President*



KARL C. VOGEL  
*Secretary*



GEORGE M. FIELD  
*Treasurer*



## - - and Notes On Their

### Those "Office Wives" . . .

GENEVA OLIPHANT — A senior in '42, a secretary in '43.

RUTH W. KENDALL — "Did you want to see Mr. Valentine?"

ESTHER H. SWAZY — "Mr. Valentine isn't in."

LUCILLE WALDON — "Yes, this training is free."

MADONNA YAUKY — Last year's editor.

MARY TORGRIMSON — "...Have your teachers sign this, please."

New headachees came to Mrs. Fylious Fisher and Mrs. Harriet Eden in the form of red and white excuse blanks. Miss Juanita Jane Rucker become the sponsor of the senior class.

Miss Edith Runyan took the place in our mathematics department vacated by Mr. Harrell at mid-term. Mrs. Ann C. Smith, newcomer to the history department, was replaced by Mrs. Margaret Poole, not pictured here. Another "freshman" English teacher is Mrs. Bernice Kirk.

For a full year well done, congratulations to you, faculty.

GENEVA OLIPHANT, Secretary, War Production Training.

RUTH W. KENDALL, Secretary, Superintendent's Office.

ESTHER H. SWAZY, Secretary Superintendent's Office.

LUCILLE WALDON, Secretary, Trade and Industrial Education.

MADONNA YAUKY, Clerk, Principal's Office.

MARY TORGRIMSON, Bookkeeper, Principal's Office.

FLORENCE SMITH, B. S.  
Biology, Health

GARRETT H. GROSS, A. B.  
Biology, Health

ATHA A. PINNICK, A. B., M. A.  
Botany, Health, Safety

GEORGE C. BRONSON, A. B.  
Chemistry, Safety, Astronomy

IVAN HODSON, M. A.  
Physics





# *To Seniors of 1943*

Yesterday, today, and tomorrow — with today, opening doors from the small, narrow stage of high school life into the realities of an odd world. The reception into that world of tomorrow will be just as interesting and as fascinating as you make it. If you approach that step with a careless, indifferent, "don't care" attitude, your reception will be of that same type with dark skies, cruel people, and an uncertain future. Your yesterdays were vainly spent, but your approach can be definitely constructive and vital. Therefore, your yesterdays were constructive and dynamic.

The mental attitude of all of us now is very important in our world. If we harbor fears,

hates, injustices, misunderstandings, and suspicions, we normally isolate ourselves from the world. We dare not withdraw from the world, but we must take our rightful place of privilege and responsibility to help keep a peaceful balance. If through faith we trust, believe in, and serve humanity of all races, and all beliefs, then our position will be one of usefulness and prestige. We cannot camouflage what we really are in a world of positive reality.

To each graduate, I say, prepare, be urgent, but patient, and discipline yourself to rise above the common life. Time is your benefactor, and God is your protector. Through faith we rise to live.

JOE R. CRAW



C. C. BITLER, M. D.  
*President*



KARL C. VOGEL  
*Secretary*



GEORGE M. FIELD  
*Treasurer*





# Our Faculty - - -

ELAINE RAY, A. B.  
*Business Education*

MAURICE FESSLER, A. B.  
*Business Education*

HOWARD ROCKHILL, A. B.  
*Business Education*



A. DALE ALLEN, A. B.  
*Mathematics, Journalism, History, Phoenix*

RAY BROOKS, B. S., M. S.  
*Agriculture, Science*

JOHN D. LESLIE, A. B.  
*History*

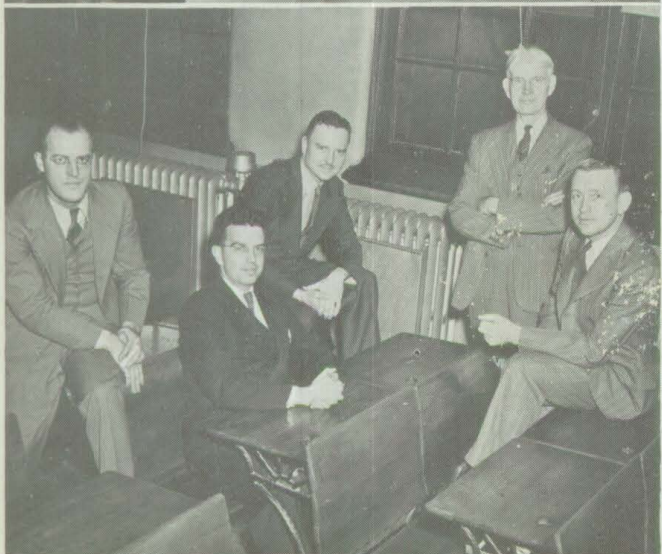


WILBUR N. ALLEN, A. B.  
*History, Basketball, Golf*

STEPHEN M. BAKER, A. B.  
*Vocational and Civic Guidance, Football*

RANDALL LAWSON, B. S.  
*Physical Education, Track, Assistant  
Football and Basketball Coach*

ELIZABETH HARRINGTON  
*Physical Education, Tri-Hi, Girls'  
Sports Club*



ALFRED O. BAKER, B. S.  
*General Shop*

ROBERT P. MCCLEOD, B. S.  
*Director of Trade and Industrial Education*

NOEL T. MYERS, B. S.  
*Machine Trades*

JOSEPH A. GREENSTREET, A. B.  
*Printing*

LESTER VICKERS, B. S.  
*Drafting*



# *the Things They Teach*

Fall of '42, a new year, brought changes in the teaching staff. Miss Elaine Ray, the blonde from Ball State, joined us to help prepare our students for business jobs. To the history department came A. Dale Allen, with some ideas, also, for striving journalists. Mr. Ray Brooks began to teach our boys about agriculture.

Mr. Robert P. McCleod, now acting as director of trade and industrial education, was joined by Mr. Alfred O. Baker in the general shop and Mr. Lester Vickers in the drafting room.

To bolster the English department and take over the National Honor Society, came Miss Catherine Ratcliffe. Christmas time found Miss Louise Arford, another new teacher of our language, following Mrs. Herbert Heller as faculty advisor for the annual.

William Kleyla, bandmaster supreme, gave up baton swinging for playing in the Army Air Corps. In his place came the capable Mr. McGuire, not pictured here.

CATHERINE RATCLIFFE, A. B., M. A.  
*English, Honor Society*

LOUISE ARFORD, A. B., M. A.  
*English, Rosenmial*

HORACE BURR, JR., A. B., M. A.  
*English, Dramatics, Senior Class Play*

MARGARET LEAKEY, A. B.  
*English, History*

WILLIAM D. KLEYLA, B. P. S. M.  
*Instrumental Music, Boys' Glee Club*

MAY DORSEY, B. M., M. M.  
*Choir, Sight Singing, Crescendo Club Girls' Glee Club*

MARY M. MANIFOLD, B. S.  
*Art*





## - - and Notes On Their

### Those "Office Wives" . . .

GENEVA OLIPHANT — A senior in '42, a secretary in '43.

RUTH W. KENDALL — "Did you want to see Mr. Valentine?"

ESTHER H. SWAZY — "Mr. Valentine isn't in."

LUCILLE WALDON — "Yes, this training is free."

MADONNA YAUKY — Last year's editor.

MARY TORGRIMSON — "Have your teachers sign this, please."

New headachees came to Mrs. Fylius Fisher and Mrs. Harriet Eden in the form of red and white excuse blanks. Miss Juanita Jane Rucker become the sponsor of the senior class.

Miss Edith Runyan took the place in our mathematics department vacated by Mr. Harrell at mid-term. Mrs. Ann C. Smith, newcomer to the history department, was replaced by Mrs. Margaret Poole, not pictured here. Another "freshman" English teacher is Mrs. Bernice Kirk.

For a full year well done, congratulations to you, faculty.

GENEVA OLIPHANT, Secretary, War Production Training.

RUTH W. KENDALL, Secretary, Superintendent's Office.

ESTHER H. SWAZY, Secretary Superintendent's Office.

LUCILLE WALDON, Secretary, Trade and Industrial Education.

MADONNA YAUKY, Clerk, Principal's Office.

MARY TORGRIMSON, Bookkeeper, Principal's Office.

FLORENCE SMITH, B. S.  
Biology, Health

GARRETT H. GROSS, A. B.  
Biology, Health

ATHA A. PINNICK, A. B., M. A.  
Botany, Health, Safety

GEORGE C. BRONSON, A. B.  
Chemistry, Safety, Astronomy

IVAN HODSON, M. A.  
Physics





# *New Duties*

JESSIE L. WRIGHT, B. S.

*Home Economics, Home Economics Club*

FYLIOUS S. FISHER, B. S.

*Girls' Attendance, Home Economics, Sunshine Society*

HELEN R. ROGERS, A. B.

*English*

JUANITA JANE RUCKER, A. B.

*Speech, English, Senior Sponsor*

L. BERNICE KIRK, A. B.

*English*

MABLE HODSON, A. B., M. A.

*Latin, Mathematics*

HARRIET C. EDEN, A. B.

*French, English, Boys' Attendance*

LEWELTA POGUE, A. B., M. A.

*Spanish, Business English*

GLADYS CLIFFORD, A. B.

*Latin, English*

EUNICE CLEO ORR, A. B., M. A.

*Mathematics, Student Council*

ANN C. SMITH

*English, Latin, History*

FERN HODSON, A. B., M. A.

*Mathematics*

EDITH RUNYAN, A. B.

*Mathematics*











## *News of the Classes . .*

Herein we picture our 1000 characters. We no longer consider ourselves just graduating seniors or beginning freshmen, but citizens, Americans, who not only are studying to take an important place in tomorrow's world, but are doing our share now. Many of us already have jobs in homes, shops, factories, and on farms. Some of us began carrying a gun for Uncle Sam before this school year was finished.



# *The Campus Courier*

## *Senior Class Chooses Colors, Motto and Flower*

COLORS: Mulberry wine and delphinium blue.

FLOWERS: Better times rose and snow white rose.

MOTTO: "Not finished, just begun."

Editorial: Outstanding service to the senior class is rendered by the College Guidance Clinic, which helps seniors plan for their careers. Under the direction of Miss Fern Hodson and Miss Elaine Ray, this clinic enables the seniors to meet representatives of many colleges and discuss with them their college plans. Career Day provides an opportunity for them to meet representatives of all professions, trades, and vocations, and to get first hand information on that all-important choice of their life work.



## *Senior Class Officers*

President	RICHARD McDONNELL
Vice-President	TAYLOR I. MORRIS, JR
Secretary	SUSAN LONG
Treasurer	JEAN CANNON





### *Feature . . .*

Iris and Ted's faces mirror the feelings of all seniors as they first robe themselves in traditional caps and gowns.

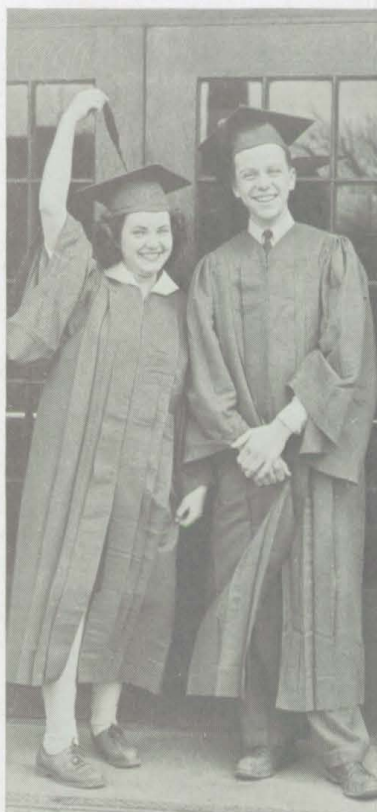
Beth Emery pays her second installment to Robert Crauder, Business Manager for the Rosennial.

### *Society Notes . . .*

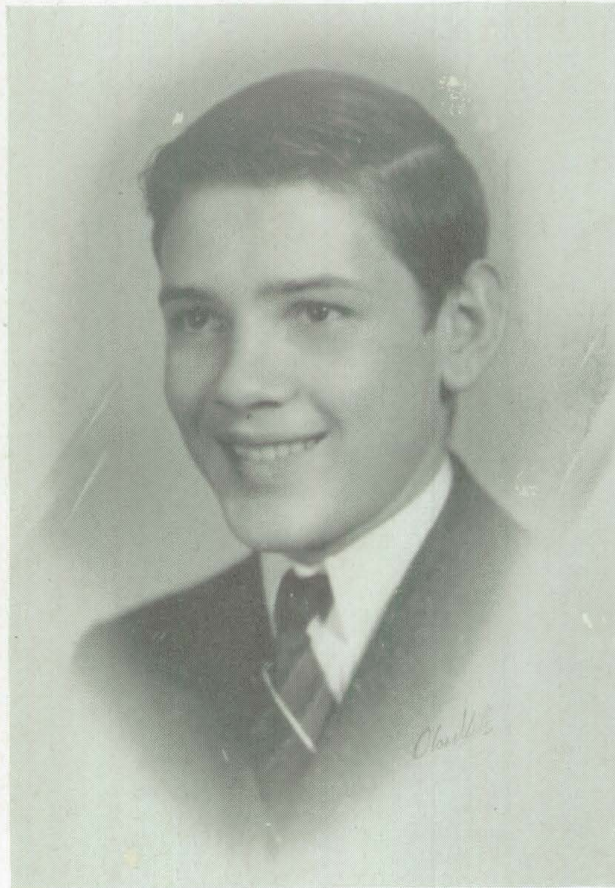
The Class of '43 entertained the Class of '42 at the Junior-Senior Prom. Betty Jacoby was crowned Prom Queen. Her charming attendants were Susan Long, Peg Dalton, Joy Davis, and June Byers. In checked vests and bustles, the Juniors cavorted to the strains of "Father, Dear Father" and the "Can Can," as the program feature. The evening's grand "melldrammer" was a touching enactment of "Frankie and Johnnie."

### *May Queen . . .*

Winifred Caldwell was crowned May Queen at the annual May Morning Breakfast given for the senior girls by the Business and Professional Women's Club. She was attended by Susan Long, Eleanor Ramsey, Betty Chappell, Virginia Lee, Patsy Patterson, and Dorothy Ellen Caldwell.







JEAN HAROLD MATHES

1925 - - 1942

*Basketball, Hi-Y, Phoenix*



FLORINE ALLRED  
*Swimming Club*

MARCELLA ASKIN  
*Student Council*

LELAND ATKINSON  
*Secretary of Agriculture Club*

MARY EVELYN BAILEY  
*Bowling Club, Sunshine Society*

ELAINE BALDOCK  
*Class Play, Tri-Hi, Choir*

MARALENE BALLINGER  
*Dramatics Club*

MARY BANTA

SARAH LOUISE BEAL  
*Dramatics Club, Class Play, Prom*

HARRY WALTER BELL  
*Basketball, Hi-Y, Prom*

DONALD R. BERGIN  
*Hi-Y, Football*

BETTY BLACKSTEN

JACK BLUM  
*Projectionist Club*

BRYANT BOUSLOG  
*Social Studies Club*

WILLIAM BROOKSHIRE  
*Hi-Y, Dramatics, Class Song*

CHARLES S. BROWN, JR.

JUANITA JEANNETTE BROWN  
*Phoenix, Safety Club*

CLARENCE BRUMFIELD

JUNE BYERS  
*Tri-Hi, Phoenix Staff*

DOROTHY L. CAIRNES  
*Choir, Dramatics Club, Prom Committee*

DOROTHY ELLEN CALDWELL  
*Editor of Rosennial, Editor of Phoenix,  
Tri-Hi*

WINIFRED CALDWELL  
*Tri-Hi, May Queen, National  
Honor Society*







JEAN CANNON  
*Treasurer of Senior Class, Tri-Hi, Yell Leader*



PHYLLIS CANNON  
*Class Play, Tri-Hi, Dramatics Club*



VIRGINIALEE CARMACK  
*Bowling Club, Dramatics Club, Latin Club*



LOIS V. CARNES  
*Spanish Club, Safety Club*



BARBARA CARPENTER  
*Dramatics Club, Spanish Club Treasurer, Phoenix*



BETTY CARTWRIGHT  
*Girls' Glee Club, Girls' Sports Club, Home Economics Club*



BETTY LOU CASHNER  
*Tri-Hi Treasurer, National Honor Society President, Crescendo Club*



MARGUERITE CASSIDY  
*Dramatics Club*



JEAN CHALFANT  
*Dramatics Club*



BETTY CHAPPELL  
*Vice-President Safety Club, Dramatics Club, Class Play*



RUTH CLEMMONS



DAN CLICK  
*Hi-Y, Football, Dramatics Club*



WALTER CLINE  
*Machinists Club*



PHYLLIS JEAN CONRAD  
*Safety Club, Bowling Club*



DOROTHY CONWELL



LOIS CONWELL



BETTE ROSE COOK  
*Tri-Hi, "A" Orchestra, Dramatics Club*



LILLIAN IRIS COOPER  
*Phoenix Staff, Dramatics Club, Bowling Club*



KATHARINE COPELAND



JUNIOR CORY



ROBERT CRAUDER  
*Business Manager of Rosennial, National Honor Society, Science Society*



PEGGY DALTON  
*Rosennial Staff, Junior Class Secretary, Tri-Hi*

YVONNE DAMERON

EARL E. DARLING  
*Safety Club, Football, Phoenix*

DOROTHY IRENE DAVIS  
*Choir, Girls' Glee Club, Sunshine Society*

FORREST EUGENE DAVIS  
*Chaplain, Choir, President of Agriculture Club*

JAMES MARQUIS DAVIS  
*Track, Hi-Y, Class Play*

JANETTE DAVIS

DOLLIE DEARMOND

ERNEST DEGE

RAYMOND E. DINKINS

ELMA DURHAM  
*Girls' Sports Club, Glee Club, Vice-President of Home Economics Club*

CHARLES A. DURRELL, JR.  
*President Student Council, Rosennial Staff, Hi-Y*

PAUL ELLIS  
*Glee Club*

JAMES EVANS

GEORGIA FANNON

DOROTHY MAY FRAZIER  
*Girls' Glee Club*

ROBERT A. FULTON

DONALD FURBEE  
*Yell Leader, Football, Choir*

SARAH LEE FURBEE

BETTE SUE GARR  
*Sunshine Society, Spanish Club, Safety Club*

ROSEMARY GARVEY  
*National Honor Society, Tri-Hi, Phoenix Staff*







KATHRYN GOAR  
*Phoenix, Band, Color Committee*

MARY JUANITA GOAR  
*Dramatics Club*

GALE GREGORY



WILLARD GREGORY

ROBERT E. GRIFFIN  
*Student Council, Hi-Y*

ERNEST E. GUILING  
*Band, Orchestra*



FRANK J. HAGERMAN  
*Agriculture Club*

THEODORE HALL  
*Hi-Y, Chairman Flower Committee*

JEAN HARLAN  
*Class Play, Band, Dramatics Club*



MARTIN L. HARLAN  
*"A" Band, Boys' Glee Club, Projectionist Club*

CHARLES HARP

PHYLLIS HECK  
*Latin Club, Bowling Club*



MARY CATHERINE HIATT  
*Tri-Hi, National Honor Society*

BETTY LOU HIMES  
*Tri-Hi*

MARTHA LEE HOGUE  
*Tri-Hi, National Honor Society,  
Treasurer Science Society*



ROBERT HUBBARD

WILMA HUCKEY  
*Girls' Sports Club, Science Society, Latin Club*

IDA MAE HUDSON  
*Tri-Hi, Secretary of Student Council, National Honor Society*



EVERETT MILTON HUTSON

RUTH IVEY  
*Sunshine Society*

G. O. JACKSON, JR.



BETTY JACOBY  
*Tri-Hi, Dramatics Club, Junior Prom Queen*

BETTE JOHNSON  
*Air Raid Warden, Sunshine Society, Hall Patrol*

EVA KALK  
*Tri-Hi, Yell Leader, Radio*

JOHN KEITH

JAMES ROBERT KELLAM

EVELYN LOUISE KENNEDY  
*Student Council, Sunshine Society  
Phoenix*

MARY KING  
*Girls' Sports Club, Nature Club, Jr. Historical Society*

GERTRUDE KLOTSCH  
*Dramatics Club, Rosennial Staff, Twirler*

HOWARD LANNERD

CHARLES LATHAM  
*Machinists' Club*

BRUCE H. LEAKEY  
*Hi-Y, Dramatics Club, Asst. Business Manager*

GROVER LEDBETTER  
*Safety Club, Spanish Club*

VIRGINIA ANN LEE  
*Secretary of National Honor Society, Secretary of Tri-Hi, Art Editor of Rosennial*

PAUL RICHARD LEWIS  
*Hi-Y, Football, Rosennial Staff*

SUSAN LONG  
*President of Tri-Hi, Secretary of Senior Class, National Honor Society*

ROBERT LUELLAN  
*Science Society, Hi-Y, Student Council*

JAYNE LUKE

JAMES RODCRICK MACDONALD  
*Associate Editor of Rosennial, Hi-Y, Secretary of Science Society*

RICHARD McDONNELL  
*President of Senior Class, Football, Hi-Y*

DEANE MCGILL  
*Printing Staff*

JAMES MCGRADY  
*Rosennial Staff, Phoenix Staff, Ski Club*







JOHN McGRADY  
Phoenix Staff, Golf, Printing Staff

ROSEMARY McMULLEN  
Choir, Girls' Glee Club, Sunshine Society

ODELL McWHORTER  
Treasurer of Safety Club



DOROTHY MADDY

BARBARA DON MAIN  
Class Play, Tri-Hi, Vice-President of  
National Honor Society

ELVA C. MARTIN  
Prom Committee, Dramatics Club,  
Sunshine Society



JANET MARTIN  
Tri-Hi, Student Council, Dramatics Club

ELSIE MEGGS  
Science Society, Safety Council

RILLA MILLIKAN  
Tri-Hi, Dramatics Club, Band



PAUL MILLS  
Band, Orchestra, Hi-Y

GEORGE MISENER

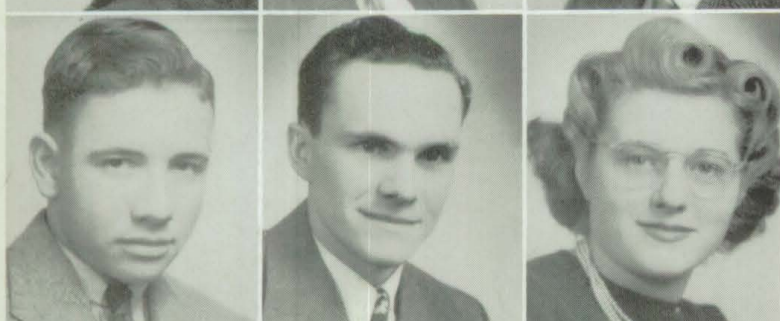
JOHN P. MORGAN  
Latin Club, Phoenix Staff, Track



DOROTHY MORRIS  
Tennis, Phoenix Staff

TAYLOR I. MORRIS, JR.  
President of Hi-Y, Vice-President of Sen-  
ior Class, Business Manager of Phoenix

CHALMER MURNAN  
Football



OSCAR L. NEMETH  
Safety Club, Intramurals

EVERETT NEW  
Track, Varsity Club, Football

MARTHA NIELANDER  
Tri-Hi, Band, Class Play



PHYLLIS NUTTY  
President of Sunshine Society, Band, Rosemial  
Staff

CHARLES OSBORN

ANNABELLE OWENS



DONALD PADGETT  
Golf, Class Play

WILLIAM PAUL PADGETT  
Class Play

PATRICIA PATTERSON  
Vice-President of Tri-Hi, Rosen-  
nial Staff, Student Council

ROBERT M. PLATTS  
Football, Golf, Varsity Club

FRANCIS L. POLLITT  
Machinists' Club, Civil Air Patrol, Vic-  
tory Corps

CHARLES POPPLEWELL  
Science Society, Convocation Com-  
mittee

ALICE PORTER  
President of Girls' Sports Club

ELEANOR RAMSEY  
Secretary of National Honor Society, Tri-  
Hi, Band

LOUISE RATCLIFF  
Tri-Hi, Choir, Vice-President of  
Crescendo Club

BETTE MAE REES  
Dramatics Club, Sunshine Society

PHYLLIS JEANNE RICE  
Girls' Sports Club, Phoenix Staff, Sun-  
shine Society

MARY VIOLA RIFNER  
Girls' Sports Club, President of  
Home Economics Club, Girls'  
Glee Club

CHARLES V. ROBINSON  
Machinists' Club, Golf

BETTY SEARS

RACHEL SEARS

LLOYD SHAFFER  
Basketball, Varsity Club

ADA SHEPPARD  
Girls' Sports Club, Phoenix, Prom Com-  
mittee

EUGENE SHEPPARD  
Dramatics Club

LOIS JEANNETTE SHULTZ  
President of National Honor Society, Tri-Hi,  
Student Council

DONALD SIDWELL  
Football, Basketball, Track

EDWARD SIDWELL  
Football, Basketball, Track







HELEN SMITH



RANDALL SMITH

*Class Play, National Honor Society,  
Orchestra*



WILBUR STAIRS

*Track, Crescendo Club, Pro-  
jectionists' Club*



ARTIE JUNE STEPHENS

*Band, Orchestra*



MARY ELLEN STEPHENSON

*Phoenix Staff, Tumbling Team*



ELIZABETH STILLWELL



JACK D. STOCKS

*College Guidance*



DONALD STOOPS

*Track, Dramatics Club, Intramurals*



MARYELLEN SYMONS

*Tri-Hi, National Honor Society,  
Rosennial Staff*



ERNEST THOMPSON

*Football, Varsity Club*



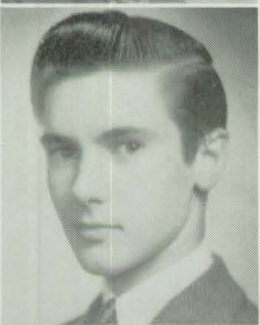
BERNIECE TURNER



JEAN TURNER



RUTH TUTTEROW



JOSEPH TYLER

*Class Play, Dramatics Club*



LEWIS VAN CAMP

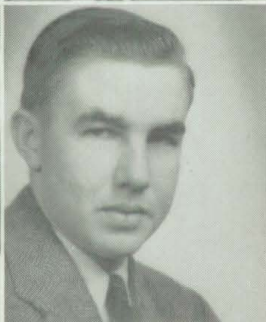
*Phoenix Staff*



DALE VAN HOOSE



MAXINE VAUGHT



ROBERT VIVIAN

*President of Science Society, Hi-Y*



KATHRYN WALN



DONALD WARDLOW

*Orchestra, Projectionists' Club, Science  
Society*



PAUL E. WEBSTER



MELVIN F. WILKINSON  
National Honor Society, Social Studies Club,  
Science Society

CHARLES WILT  
Football, Hi-Y, Varsity Club

JANE WISWELL  
Bowling Club, Sunshine Society



## *Class Song of 1943*

These past four years have gone so fast  
And now we're here to say  
That with a shadow on our school days cast  
We'll soon be on our way.

From freshman year to senior year  
Those years to us so dear,  
So with a sad heart and a tearful eye  
We'd like to say this to you.

### CHORUS:

We'll always remember our teachers and friends,  
Our future awaits us, our life's path begins.  
The memories of prom and roaming the hallways  
Are a few of the things that will live with us always.  
So with a catch in our voices and tears in our eyes  
Farewell, N. H. S., we say good-bye.

Words and music by  
WILLIAM BROOKSHIRE



# *Underclassmen*



## *Junior Class Officers*

President	OVID CHAMBERS
Vice-President	WILLIAM BURK
Secretary	RUTH WILLIAMS
Treasurer	BARBARA BUNCH

The junior class met at the opening of the second semester to elect its leaders. Soon afterward committees were announced to prepare for the annual prom. They planned a gay and gracious affair, which we all attended on May twenty-first.

Because boys in the senior class were working and fighting, several juniors had great pleasure in substituting for them in the senior class play.



## *Juniors . .*

BOTTOM ROW: Otto Bailey, Helen Beam, Barbara Bunch, Doris Byrket.

SECOND ROW: William Bryant, Betty Browning, Bernetha Bond.

THIRD ROW: Marietta Ashley, Ann Louise Brown, Evelyn Chenault, Doris Burkhardt.

FOURTH ROW: George Barnard, Donald Archey, Eugene Auten, Thomas Antic.

TOP ROW: James Adams, Albert Alexander, William Burk, William Bales.



BOTTOM ROW: Betty Jane Mukes, Mary Mitchell, Bonnie Reece, Elizabeth Stillwell, Thelma Chandler.

SECOND ROW: Bernadine Covalt, Thelma Cline, Martha Mahoney, Rosemary Mitchell, Sally Miller.

THIRD ROW: Edra Davis, Wilma Turner, Evelena Duvall, Orgretta Cole.

FOURTH ROW: Barbara Cartwright, Wayne Coers, Harriet Turpin, Barbara Moore, Phillip Dunaway.

FIFTH ROW: David Davis, Robert Cox, Harold Stanley, Max Elliot.

TOP ROW: Marvin Frary, Robert Vanzant, Forrest Tungate, Glen Crandall, Wayne Glad.







BOTTOM ROW: Caroline Fisher, Margaret Flynn, Virginia Howard, Janis Goar, Helen Hanning.

SECOND ROW: Catharine Gordon, Ruth Frost, James Hunnicutt, Robert Higgs, Albert Hines.

THIRD ROW: Nevada Halfacre, Bill Harding, Jean Hicks, James Howren, Richard Ingersoll, Cecil Harmon.

TOP ROW: Roy Helms, Bill Holloway, John Paul, Lewis Farmer.



BOTTOM ROW: Paul Miller, Bob Luellen, Helen Hudson, Violet Kennedy, Ruth Mattox, June Lockridge, Helen Jackson, Jacque Leffler.

SECOND ROW: Richard Kinsey, Elenora Lawson, Barbara Kaye, Barbara Jordan, Ruth Knollman, Leatha Lorton.

THIRD ROW: John Kennedy, Charles McMillan, James Lunsford, Bob Meese, Bob Kirby, Tommy Lester.

FOURTH ROW: Floyd Mastin, Billy Mullen, Rudolph Jolly, Junior Keith.

TOP ROW: Twila Modlin, Edwin Lee.



BOTTOM ROW: C. W. Nichols, Paul Spicer, Thelma Smith, Evelyn Smith, Herbert Shelley, Erline Smith.

SECOND ROW: Victor Rice, Eloise Smith, Gene Strong.

THIRD ROW: Marjorie Stewart, Pauline Pelfrey, Betty Scroggin, Sherwood Ryan, Bob Sherry.

FOURTH ROW: Dawna O'Rear, Ruth Newman, Norma Jean Scott, Glenna O'Rear, Jimmy Scott.

TOP ROW: Paul Stevens, Walter Nemeth, Donald Norris, Merle Razor, Robert Shaffer, Ralph Sanderson.



BOTTOM ROW: Marjorie Sanders, Sherma-  
lee Smith, Mary Stearns, Agnes Schet-  
gen, John Stillwell.

SECOND ROW: Edith Shaperio, Martha  
Sharp, Mary Sharp, Faith Rinard,  
Elizabeth Rouse.

THIRD ROW: Dorothy Saathoff, Mildred  
Rains, Pauline Osborne, Clarcie Re-  
neau, Burneda Popplewell.

FOURTH ROW: Harry Sutherland, Beulah  
Neal, Mary Alice Pugh.

TOP ROW: Bill Shelley, Frank Pfenninger,  
Herschel New, Bob Polk, Jack Payne.



BOTTOM ROW: Gene Witt, Ruth Williams,  
Dorothy Zirkle, Marie Molees, Chris-  
tine Withers.

SECOND ROW: Berniece Fowler, Evelyn  
Van Gordon, Donald Adams, Lena  
Watt, Ruth Utt, Irene Tompkins.

THIRD ROW: Bessie Wickliff, Buddy  
Thompson, Priscilla Van Hoose, Vi-  
anna Todd, Mary Alice Townsend.

TOP ROW: Wilbur Veach, Junior Whalen,  
Darrel Winters, William Vaught, Rob-  
ert Wood, George Warner.



## *Sophomores . .*

BOTTOM ROW: Colleen Moulden, Marjorie  
Miller, Jean Morgan, Roseanna Miller,  
Christine New, Lova Moore.

SECOND ROW: Jo Ann McFarland, Lillian  
Manning, Doris Reynolds, Phyllis Mor-  
ris, Freda Mandenhall, Geneva Moist-  
ener.

THIRD ROW: Bill McCormick, Max Mc-  
Shurley, Mary McElhaney, Estella  
Marks, Sarah Messick.

FOURTH ROW: Kay McNaughton, Warren  
McDowell, Phillip Miles, Rex Martin,  
Roy Marcum.

TOP ROW: Dick Murphy, Harold Mc-  
Daniels, Howard Moystner, Howard  
McKnight, Carl Marcum.







BOTTOM ROW: Ernest Baker, Beverly Brown, June Branham, Patsy Bunch, Martha Ashley, Juanita Burgess.

SECOND ROW: Harry Burkhardt, Robert Brumfiel, Richard Archey, Joseph Bugle, Charis Bryan, Carol Buck, Betty Lou Bailey.

THIRD ROW: Paul Beard, Maurice Brown, George Burden, Mary Lou Andrews, Nila Bailey.

FOURTH ROW: John Blackburn, James Allen, Olga Barnes, Helen Ball, Lois Arnold.

TOP ROW: Robert Burke, Dennis Bolden, Leola Burris, Mary Brown, James Boyer.



BOTTOM ROW: Mark Clay, Robert Dugan, Ruth Duncan, Betty Armstrong, Louise Eden, Doris Cronk.

SECOND ROW: Charles Caldwell, Bonnie Conn, Nelma Corder.

THIRD ROW: Kathryn Chesick, Lois Cable, Joann Carmichial, Betty Jo Dalton, Irene Davis.

FOURTH ROW: Ernest Dagley, Chester Conwell, Jane Durrell, Lucille Conn, Dorothy Devening, Mary Carns, Wanda Cairnes, Martha Crandall.

TOP ROW: Virgil Ellis, Robert Conwell, Roy Dehart, John Doyle, David Diehl.



BOTTOM ROW: James Frampton, Donna Dudley, Berniece Floyd, Dorothy Furbee, Mary Ellen Gauchat.

SECOND ROW: Junior Fairchild, John Flower, Betty Everman, Beth Emry, Phyllis Fessler, Lois Jean Flowers.

THIRD ROW: Bill Cartwright, Marshall Davis, Catherine Caron, Dale Cable, Richard Cline.

FOURTH ROW: Floyd Davis, Wayne Coleman, Russel Cleek, Alfred Davidson, Boyden Dudley, Ralph Estell, Ernest Davis.

TOP ROW: Charles Hudson, Hobart Fuller, Gerald Gernstein, Fred Hiner, Delbert Hedricks.



BOTTOM ROW: Bill Heck, Dorothy Green, Mary Green, Gladys Gilbreth, Margaret Hickman, Jean Heck.

SECOND ROW: John Howren, Betty Greer, Rosemary Jackson, Martha Hudson, Mary Hogue.

THIRD ROW: William Ingersoll, Beulah Hagerman, Louise Harris, Helena Harshbarger, Amelia Grady, Evelyn Gooch.

FOURTH ROW: Nida Garner, Nancy Hudson, Betty Hendricks, Ruth Howard, Virginia Harter.

FIFTH ROW: Joseph Harshey, Frank Hayes, Gae Jones, Donna Gordon, Mark Justice.

TOP ROW: Charles Green, Phillip Heilman, Ralph Holcomb, Donald Jones.



BOTTOM ROW: Jean Long, Sarah Ludy, Barbara Lowery, Patsy Kennedy, Mary Roy Kirkwood.

SECOND ROW: Emma Kendall, Ladonna Holloway, Emogene Koger, Donna Griffin, Iris Hodgins, Martha Higgs.

THIRD ROW: Alice Jessup, Keith Klipsch, Evelyn Kemp, Rose Marie Sampley.

TOP ROW: June Keever, George Klotsch, Alfred Kern, James Lee, Robert Kendall, Gene Hammond.



BOTTOM ROW: Bernice Southwood, Eva Southerland, Georgia Southerland, Leona Pfenniger, Wilma Pollitt, Patsy Thompson.

SECOND ROW: Nadine Smith, Charlotte Supinger, Maryann Sweigart, Bonnie Swindell, Mary Redelman.

THIRD ROW: Dale Stoops, Ruth Phares, Maryann Rouse, Ethyl Reavis.

FOURTH ROW: Buddy Hackleman, James Shaw, Russell Pfenniger, George Reavis.

FIFTH ROW: Jim Stonerock, Dale Stairs, Frank Stout, Gene Smith, Ted Roach.

TOP ROW: Robert Sutton, Donald Spencer, Kenneth Sipe, James Snodgrass.







BOTTOM ROW: Marilyn Winning, Toby Roth, Betty Jo Smith, Josinah Brown, Alice Ann Wise, Betty Yost, Maxine Patterson.

SECOND ROW: Elinora Winkhart, Maxine Carter, Zenda Fears, Aurita Lawson, Donna Tower.

THIRD ROW: Delma Wantz, Virginia Clark, Norma Sidwell, Beverly Skaggs, Wanda Phillips.

FOURTH ROW: Mabel Sanderson, Lorenzo Thompson, Agnes Rifner, Martha Purvis, Freda Smith.

FIFTH ROW: Gordon Thompson, Phillip White, James Vogel, Donald Warnock, Edward Wall.

TOP ROW: Leon Turner, James VanMatre, Milo Ward.



BOTTOM ROW: Marjorie Saunders, Marjorie Winkhart, Betty Reece, Erma Wood, Emogene Fox, Adonis Thomas.

SECOND ROW: Erma Grubbs, Dorothy Poindexter, Betty Zeller, Ruth Tapscott.

THIRD ROW: Pauline Tucker, Martha Thom, Louise Witham, Myrtle Ward.

FOURTH ROW: Verlin Groves, Earl Thompson, Thomas White, Waunita Williams, Louise Wilson.

TOP ROW: Ernest Lineberry, Byron Wickliff, James Antle, John Waln.



## *Freshmen . .*

BOTTOM ROW: Barbara Gauchat, Ruth Guley, Celia Franklin, Barbara Byers, Beulah Gold, Mary E. Groce, Lela Ellington, Leanna Funkhouser, Eleanor Farmer, Mary Agnes Glynn.

SECOND ROW: Phillip Solomon, Eugene Dickerson, Marjorie Franklin, Nancy French, Maxine Gordon, Eugene Bertram, Ethel Boatwright, Maxine McClane, Robert Basset, Joe Foyst.

THIRD ROW: Danny Grunden, Wanda Armstrong, Mildred Dinkins, Ruth Cooney, Charlene Cohee, Jane Chapman, James Crane.

FOURTH ROW: Russell Furbee, Walter French, Robert Crandall, Robert Gates, John Bland, Richard George, Dale Brown, Carl Goin, Howard Craig.

TOP ROW: Robert Baldock, Robert Owens, Marvin Clark, Donnie Edwards, Richard Dicken, Clarence Carter, Jay Gray, Charles Green, Max Cory, James Owens, Arlis Tout.



BOTTOM ROW: Betty Whitten, Phyllis Smith, Mary Millikan, Mary Stearnes, Joan Devening, Charlene Griffin, Joan Roberts, Ethel Turner, Elizabeth Burton, Roena Catron, Georgia Axel, Edna Ward.

SECOND ROW: Patty Lines, Yetteva Thompson, Norma Bailey, Barbara Johnson, Mary Ellen Shanks, Donna Ryan, Edith Jones, Martha Lorton, Mary Carman, Rosamond McQuery.

THIRD ROW: Irene Rouse, Kenneth Burk, Richard Miles, John Larson, Donald Thomas, Clarence Fannon, Roy Atwater, Raymond Elwood, Tommy Underwood, Elmer Troxell.

TOP ROW: John Whalen, Merle Bertram, Raymond McConnell, Bobby Neff, David Allen, Norman Roberts, Bill Poston.



BOTTOM ROW: Jeanette Click, Mildred Chesher, Glenna Boatright, Norma Carnes, Dorothy Brown, Dona Davis, Norma Andrews, Carolyn Ballenger, Melba Cross, Maxine Carter, Kathlyn Davis, Betty Croushore.

SECOND ROW: Norma Bowman, Martha Tarr, Marjorie Vivian Carender, Janelle Bailey, Allie D. Catron, Martha Dunnaway, Elizabeth Davis, Helen Clemons, Mildred Broyles, Doris Dock, Ruth Blackburn.

THIRD ROW: Thelma Waltz, Audrey Clark, Doris Brennehan, Dorothy Brennehan, Phyllis Copeland, Essie Faye Lynch, Patricia Deal, Eva Shelton, Ruth Ann Goar, Georgetta Thalls.

FOURTH ROW: Donald Davis, Ray Frost, Charles Chenault, Scott Coates, Merrill Chappell, Richard Atwater, Robert Earl Allen, Gene Allen, Russell Coers, Charlie Atterson.

TOP ROW: Kenneth McRoberts, Donald Clark, Sam Kepner, Jimmie Wrightsman, Lefty Baldock, Junior Catt, Don Burk, Leo Beatty, Dick Cronk, John Budd, Wilfred Brosey.



BOTTOM ROW: Jenalle Harris, Donna Holt, Betty Luellen, Ruth Lewman, Viola Kendall, Rozetta Haynes, Alice Hole, Anita Leonard, Charlene Hastings, Mary Kalk, Helen King, Betty Hiatt.

SECOND ROW: Sattre Huffman, Betty Jean Lister, Ruth Jordon, Margaret Rose Hall, Virginia Hiner, June Harvey, Mary Jolly, Ladonna Lockridge, Dorothy Ivey, Martha Levi, Charlotte Jones.

THIRD ROW: Dick Lineberry, Bob Helms, Roscoe Keesling, Bob Lee, Herman Hill, Frankie Hays.

FOURTH ROW: Tilmond Smith, Norman Harding, George Wright, Paul Huse, Ralph Hodgins, Jay Lindley, Tommy Irelan, Bill Ingersoll, Jimmy Lee, Dick Johnson, Emerson White.

TOP ROW: Bill Kirby, Wiley Jay, Bob Longwith, Dick Johnson, Dallas Lassen, Denver Loveless, Emory Sheffield, John Hiner, Jim Hutchens, Max Lee.







BOTTOM ROW: Regina Prater, Ethel Poynter, Betty Polk, Christine Robinson, Alice Osborn, Christine Phipps, Betty Tatom, Patricia Todd, Betty Thurman, Geneva Shumak.

SECOND ROW: Virginia Rhodehamel, Mary Richter, Gloria Pearson, Patricia Pea, Martha Overman, Rosnell Marks, Martha Maple, Marjorie May, Jean Lineback, Jessie Opal McGahn, Donna Montgomery.

THIRD ROW: Joan Nolley, Eileen Jenkins, Phyllis Holtzel, Ruth Meggs, Lela McGill, Beverly Keller, Clara Laughlin, Jean McKechnie, Mary Alice Neal, Nelly Mahoney, Deloris McGinnis, Margaret Newcomer.

FOURTH ROW: James Marshall, John Minyard, John Jones, J. H. Payne, Margaret Marks, Bob Matthews, Howard Millis, Eugene Ratcliff, Rex McGee, Johnny Mastin.

TOP ROW: Bobby Preble, Bob Lee, Stanley Harding, Charles Powers, Leland Macer, Joe Ramsey, Jack Peckinpugh, Truman Pope, George Parker, Raymond Porter, Glen Razor.



BOTTOM ROW: Barbara Walker, Jewell Wright, Dorothy Weddell, Lela Upchurch, Darlene Wilkinson, Joan Wainscott, Jerry Wilson, Margaret Wilkinson, Barbara Yost, Betty Walker, Betty Walden.

SECOND ROW: Dolly Stillwell, Alma Wilson, Annabelle Spannuth, Lucille Thompson, Ada Turner, Hazel Wilkinson, Geraldine Vanatta, Phyllis Whitten, Adelia Waln, Madonna Waln.

THIRD ROW: Barbara Saunders, Edna Tungate, Martha Stinson, Martha Tarr, Dorothy Shaw, Marie Surber, Jeanette Thompson, Louella Stephens, Suzanne Teetor, Emma J. Sutherland, Doris Swim.

FOURTH ROW: Herschell Wallen, Bill Williams, Billie Wright, Morton Shapiro, Jim Spera, William White, Macy Wardlow.

TOP ROW: Rual Vincent, Floyd York, Joe Buggle, Robert Fox, Jim Smith, Tommy Waggoner, Dick Tully, Dick Weaver, Ben Hughs.



BOTTOM ROW: Beulah Denny, Dorothy Higgs, Donna Ballenger, Violet Arthur, Mary Cowan, Barbara Tout, Virginia Hutchens, Phyllis Jean Dalton, Margaret Alexander, Gloria Turpin, Wanda Moles.

SECOND ROW: Janet Kennedy, Geneta Smith, Patricia Ruth Miller, Judy Capshaw, Helen Bush, Doris Hodgins, Barbara Hollaway, Virginia Jackson, Opal Bell, Geneva Bishop.

THIRD ROW: Hurbert Fletcher, Donald Shadrack, Delmar Foster, Jackie Davis, Elmer Clevenger, Marvin Broyles, Ralph Guffey, Kenneth Shelly, Clarence Schofield, Fred Teal, Sonny Robinson.

TOP ROW: Bill Land, Jamie Cunningham, Fred Thiechman, Willard Kennedy, Charles Chance, Ray New, Dane House, Eugene Caldwell, Ralph Clements, James Branscum.













## *News of Our Activities*

LEADING THEIR ORGANIZATIONS TO FINER ACHIEVEMENTS, THESE PRESIDENTS OF THE VARIOUS GROUPS LOOK UPWARD. HERE IS THEIR MEMBERSHIP AND A RECORD OF THEIR ACTIVITIES AND ACCOMPLISHMENTS.





## *Sunshine Society Officers*

Ruth Williams - Corresponding Secy.  
Joan Carmichial - Treasurer  
Betty Luellen - Recording Secy.  
Phyllis Nutty - President  
Fylious Fisher - Sponsor  
Dorothy Maddy - Vice-President



## *Student Council*

BOTTOM ROW: Russel Coers, Boyden Dudley, Lois Shultz, Patsy Bunch, Melba Cross, Peggy Dalton, Mary Sharp, Mary Alice Townsend, Buddy Hackelman, Dale Stoops.

SECOND ROW: Robert Griffin, Tim Morris, Virginia Lee, Ruth Howard, Ruth Tapscott, Mary Rifner, Mary Kalk, Glenna O'Rear, Winifred Caldwell, John Blackburn, Jack Durrell.

TOP ROW: Fred Yelton, Kay McNaughton, Alice Jessup, Marjorie May, Sponsor Cleo Orr, Agnes Rifner, George Stotemyer, Phil White, Gene Witt.



## *Agriculture Club*

BOTTOM ROW: Paul Powers, John Blackburn, Forrest Davis, Jimmy Hutchins, Philip Solomon.

SECOND ROW: Paul Huse, James Vaughn, Wendell York, Forrest Tungate, Bobby Owens, Harold McDaniel.

TOP ROW: Harold Craig, Marvin Clark, Hershel New, Max Sisk, Harold Conway, Bob Crandall, Mr. Brooks.



## *Home Economics Club*

BOTTOM ROW: Mary Brown, Opal Turner, Mary Elizabeth Groce, Charlott Jones, Margaret Marks, Mary Rifner, June Lockeridge.

TOP ROW: Sponsor Jessie Wright, Jesse Opal McGahn, Delores Winter, Irene Davis, Doris Reynolds, Norma Jean Carnes, Mary Alice Neal, Jean Schell, Sarah Furbee, LaDonna Lockridge.



## *Sunshine Society*

Sunshine Society members brought much happiness into many lives by their activities this year. At Thanksgiving time they presented baskets of food to needy persons. On Valentine's Day they honored the teachers at a Valentine party. Mr. Craw and Miss Ray were crowned King and Queen of Hearts. On each teacher's birthday he or she is presented with a desk flag. These flags have almost become a symbol of N. H. S. class rooms. At the state convention the New Castle club was reported to have given the largest sum of money to the Riley Hospital Fund of all the clubs in the state. They concluded the year with a sunrise Easter service in the Sunshine room.

## *"Ag" Club*

Evidences of the fact that the "Ag" Club is fulfilling its purpose of producing better farmers for tomorrow are the many honors which have come to them this year. The crops judging team placed first in the county and third in the district contest. Versatile, as well as capable, the members of the club placed third in dairy cattle and fourth in livestock judging in the county contest this spring. Individual honors went to Truman Pope, who was high point man in the district crops judging contest.

## *Student Council*

As Congress is to the United States, so is the Student Council to our high school. It voices the opinion of each student. Because of home room changes, the Council was active only during the first semester. They accomplished much, however. Miss Orr became our splendid new sponsor, Alice Jessup was elected first vice-president of the state organization, the members sponsored a dance for the mammoth Fun Frolic, and they shared the sponsorship of the stamp and bond drive with the department of journalism.

## *Home Economics Club*

Twelve members of the Home Economics Club, meeting twice a month, have made two Red Cross afghans this winter. At Miss Wright's home, they were entertained with two lovely parties.



## Tri-Hi Club

**BOTTOM ROW:** June Byers, Jean Hicks, Edythe Shapiro, Mary Alice Townsend, Betty Cashner, Patsy Patterson, Susan Long, Virginia Lee, Elaine Baldock, Betty Lou Himes, Bette Rose Cook, Joy Davis.

**SECOND ROW:** Miss Harrington, Rilla Millikan, Bette Browning, Eleanor Ramsey, Martha Sharp, Louise

Ratcliff, Ida Mae Hudson, Lois Shultz, Betty Jacoby, Glenna O'Rear, Helen Duckworth, Peggy Dalton.

**THIRD ROW:** Martha Hogue, Barbara Kaye, Barbara Jordan, Mary Sharp, Martha Nielander, Jean Cannon, Rosemary Garvey, Winifred Caldwell, Eva Kalk.

**TOP ROW:** Norma Jean Scott, Dorothy Ellen Caldwell, Maryellyn Symons, Ruth Knollman, Dawna O'Rear, Mary Cathrine Hiatt.

The Tri-Hi Club met Wednesday evening in the library and planned to . . . give the Heart's Hop, N. H. S.'s biggest sport dance of the year . . . sell Christmas seals . . . toast the Trojan lettermen at the annual lettermen's banquet . . . sponsor with their best friends and arch-rivals, the Hi-Y, the Saturday night mixers . . . dress dolls to make some little girl happy at Christmas . . . entertain with the College Girl's Tea . . . (with fiendish glee) initiate the pledges at pledge dinner and formal initiation . . . and bid the senior members farewell at the senior party. "Our aim is to serve" chirp the forty-one members at each meeting, and they carry it out with good times for all.

## Questors' Hi-Y Club

**BOTTOM ROW:** John Jones, Raymond Porter, Russell Coers, Joe Compton, Bill Niles, Bob Longwith, Leland Macer, Bob Nichols, Ray Frost, Dick Tully, Henry Stearns, Jimmy Spera.

**SECOND ROW:** Bob Matthews, Max Cory, Bill Kirby, George Wright, Jimmy Lee, Ernest Cory, Jack Peck-

inpaugh, Howard Moisner, Charlie Green, Bill White.

**THIRD ROW:** Dan Grunden, Jim Wrightsman, John Bland, Tom Ireland, Joe Foyst, Charles Chennaut, Richard Atwater, Bob Helms, Don Edwards.

**TOP ROW:** Bud Furbee, Bob Gates, Dick George, Max Locker, Richard Lineberry, Wilford Brosey, Sam Kepner, Emory Sheffield, Buddy Hackleman, Mr. Parsons, and Mr. Allen.

The Questor's Hi-Y, composed of freshman and sophomore boys, maintains the same ideals as those of its parent organization, the Hi-Y. The Questors organize and elect officers . . . sponsor the Priority Swing . . . entertain with a chili supper at the Y . . . hold an impressive Easter sunrise service . . . attend the Fifth District Convention.

## Hi-Y Club

**BOTTOM ROW:** Dale Cable, Max McShurley, Bob Luellen, Howard Holloway, John Paul, Boyden Dudley, Jim Hunnicutt, Harry Bell, Bud Thompson, Floyd Weintraut, Bob Kirby, Sherwood Ryan, Bill Holloway.

**SECOND ROW:** Keith Klipsch, Paul Mills, Jim Lee, Edward Walls, Charles Wilt, Robert Cox, Roy Helms, Jimmy Morris, Ovid Chambers, Jack Payne, George Klotsch, Bob Kendall, Jim Stonerock, Robert Griffin, John Blackburn, A. Dale Allen.

**THIRD ROW:** Maurice Parsons, Edwin Lee, Charles Hudson, Bruce Leakey, Harold Stanley, Roddy Mac-

Donald, James Vogel, Jack Crow, Tom Lester, Wayne Coers, Forrest Davis, Byron Wickliff.

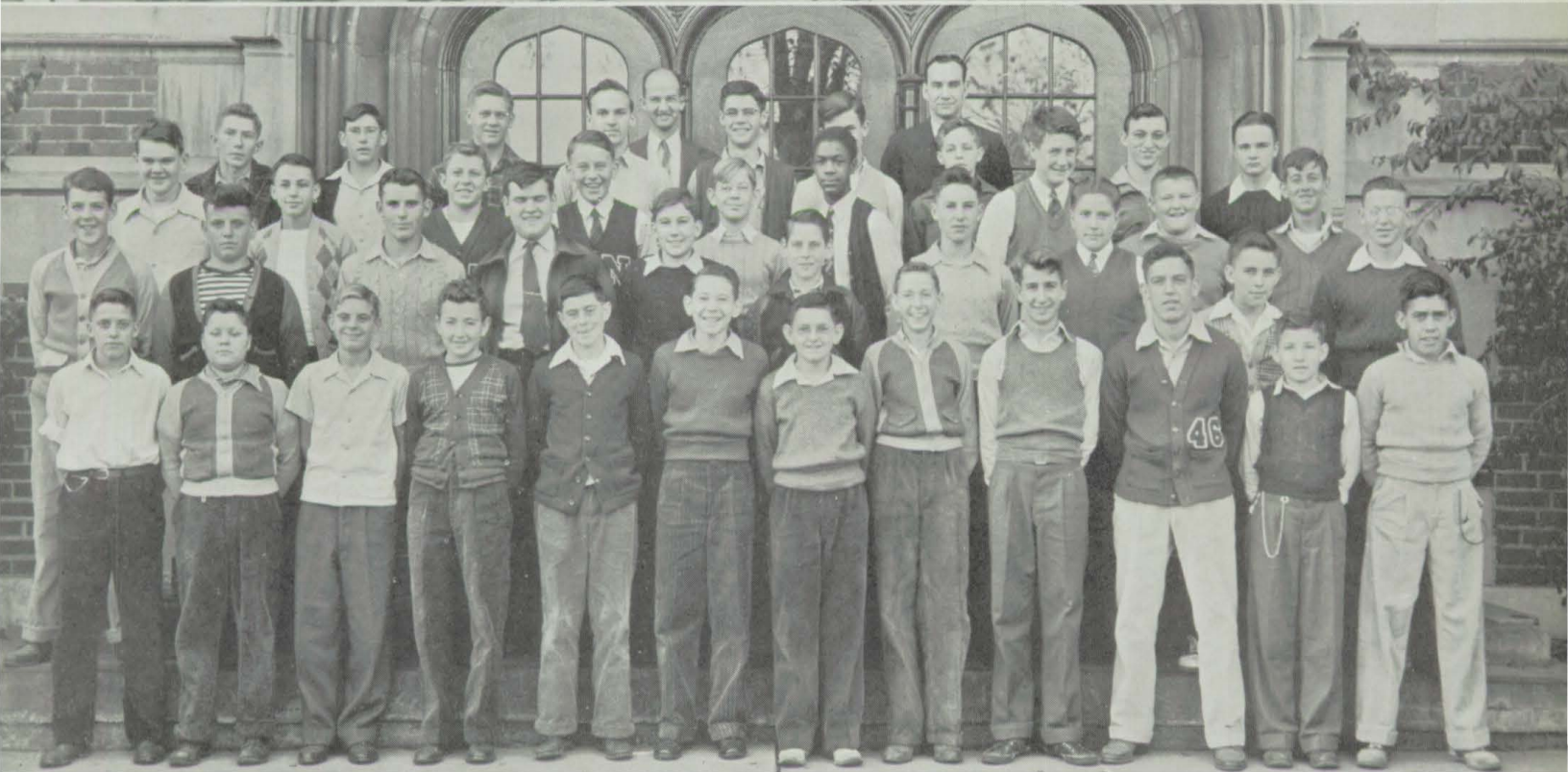
**FOURTH ROW:** Phillip White, Ted Hall, David Diehl, Kay McNaughton, Gene Witt, Jack Durrell, Frank Chance, Dan Click, James Davis, Dwayne Cartwright, Bob Sherry.

**FIFTH ROW:** Dick McDonnell, Fred Yelton, Randall Smith, Robert Vivian, George Barnard, Donald Bergin, Richard Cline, Homer Corum, David Davis, Albert Heinz, Donald Adams.

**TOP ROW:** Paul Lewis, Paul Stevens, William Bales, Henry Covert, Charles McMillan, James McGrady, Gerald Gernstein, William Brookshire.

The Hi-Y Club of N. H. S. is host to the Fifth District Rally . . . Bud Chambers and Roy Helms elected president and vice-president of the Fifth District . . . Hi-Y sponsors Harvest Hop, Sectional Swing . . . Hi-Y co-operates with Tri-Hi in giving the Holiday Dinner Dance . . . Hi-Y entertains with a Father-Son banquet . . . Hi-Y pledges cause sensation at first public appearance during pledge week. With the motto "Clean speech, sports, body, mind," the Hi-Y works for a better high school.







## *Presenting the Rosennial Staff of '43*



BOTTOM ROW: Richard McDonnell, Jack Durrell, Phyllis Nutty, Peggy Dalton, Patsy Patterson, Howard Moystner, Herbert Shelley.

SECOND ROW: Gertrude Klotsch, Susan Long, Roderick MacDonald.

THIRD ROW: Virginia Lee, James McGrady, Bruce Leakey.

TOP ROW: Maryellyn Symons, Dorothy Ellen Caldwell, Paul Lewis, Robert Crauder.

With the objective of producing a good annual, the seventeen staff members worried and worked at their job. Manpower shortages occurred even in the staff. Four members and one faculty advisor were gone before the year was ended. Miss Louise Arford became the new sponsor.

Louise Ratcliffe spent many hours collecting money and keeping books for the business staff.

We are indebted to Barbara Main for submitting several pages of copy used in this book.

Diligently we recorded bills, identified pictures, and "thought up" bright phrases. Well, here it is, the finished product. We sigh with relief and gratefully express our appreciation to those who helped us.



## Phoenix Chronicles News of N. H. S.

Always something new for its readers! This is the goal of the Phoenix, N. H. S. newspaper, published weekly under the direction of A. Dale Allen, journalism supervisor, and Joseph A. Greenstreet, printing advisor.

The same staff operated throughout the first semester, but three different staffs had charge of the issues the second semester.

Dorothy and Winifred Caldwell were editors the first semester, while the Phoenix was in charge of editors Martha Sharp, Glenna O'Rear, and Bob Sherry the second half of the year.

Seven delegates represented the Phoenix at the Indiana H. S. Press convention at Franklin College, where Bob Sherry was selected president for 1943. He will be in charge of IHSPA meetings at Franklin in October of this year.

Special issues were published during the year at Hallowe'en, Thanksgiving, Christmas, Sectional Tourney, Easter and Graduation. Two Cub issues also appeared.

The staff sent out over 150 exchange papers each week, many of them to N. H. S. boys and girls in the U. S. service.

BOTTOM ROW: Ruth Williams, Barbara Cartwright, Iris Cooper, Peggy Dalton.

SECOND ROW: Bob Sherry, Dorothy Ellen Caldwell, Mary Ellen Stephenson, George Klotsch.

THIRD ROW: Kathryn Goar, Winifred Caldwell, June Byers, Jean Cannon, Rosemary Garvey.

FOURTH ROW: Ida Mae Hudson, Evelyn Kennedy, Dick McDonnell, James McGrady, Berniece Fowler.

TOP ROW: Advisor A. Dale Allen.



FRONT ROW: Virginia Shumake, Barbara Cartwright, George Klotsch, Ruth Williams, Leatha Lorton, Martha Sharp.

SECOND ROW: Phyllis Rice, Nevada Halfacre, Mary Ellen Stephenson, Erlene Smith, Wayne Coers, Thomas Lester.

THIRD ROW: James Scott, Richard Kinsey, Lewis Farmer, Iris Cooper, Peggy Dalton, John McGrady.

TOP ROW: Advisor A. Dale Allen, Robert Sherry, Glenna O'Rear, Jean Hicks, Donald Sidwell, Dorothy Saathoff, James McGrady.







### *Dramatics Club*

BOTTOM ROW: Helen Jackson, Betty Hull, Barbara Carpenter, Virginialee Carmack, Betty Chappell, Jean Chalfant, Jerry Wilson, Bette Rose Cook, Elaine Baldock, Margaret Rose Hall, Virginia Hiner.

SECOND ROW: Irene Tompkins, Ida Mae Hudson, Janet Martin, Jack Durrell, Dan Click, Patsy Patterson, Ovid Chambers, Mary Goar, Ada Turner, Barbara Moore.

THIRD ROW: Martha Stinson, Martha Tower, Jean Harlan, Susan Long, Mary Richter, Opal Turner, Eva Kalk, Barbara Cartwright, Iris Cooper, Peggy Dalton, Alice Jessup, Ruth Knollman, Dawna O'Rear, Rilla Millikan, Horace Burr, Jr.

FOURTH ROW: Dolly Stilwell, Lois Arnold, Norma Bowman, Jean Long, Beth Emry, Eleanor Ramsey, Martha Nielander, Gloria Ann Pierson, Christine Robinson, Trudy Klotsch, Mary Lou Andrews, Dorothy Cairnes, Maralene Ballinger, Geraldine Vanatta.

FIFTH ROW: Maryellen Symons, Jacque Leffler, Jean Hicks, Mary Alice Townsend, Estelle Lester, Joy Davis, Keith Klipsch, Anna Lou Kendall, Lillian Manning, Sarah Ludy, Betty Browning, Lila Upchurch.

SIXTH ROW: Barbara Gauchat, Charlene Cohee, Jenalee Harris, Thelma Chandler, Barbara Kaye, Jean Cannon, Lucille Conn, Betty Jacoby, Dorothea O'Rear, Betty Armstrong, Robert Stoakes, Roddy MacDonald, Bruce Leakey, Sarah Louise Beal, James Davis, Bob Sherry, Buddy Hackelman.

TOP ROW: Bobby Dugan, George Klotsch, Randall Smith, Edwin Graham, Henry Covert, Joe Tyler, Bobby Kendall, Donald Stoops, Gene Sheppard, James Boyer, Richard Ingersoll, Lewis VanCamp.



## *Drama Reigns*

Members of the largest club of N. H. S. donned grease paint often this year. They presented four plays for civic organizations and three for themselves. The last semester, the club put aside all other activities and concentrated on the Senior Class Play. Highlight of the year was the club presentation of the "Melodrama Revue."

## *Senior Class Play*

A decided hit was the Senior Class Play, "Young April," a former Broadway hit, by Aurlia Rouveral and William Spence Rouveral. The play, which is a sequel to "Growing Pains," centers around the glorious misery of the love life of the young McIntyres and their friends. Everything turned out happily and the audience went home happy. The story was set before a background representing a buff-colored patio, splashed with gay reds and green of Southern California.

### *Young April Cast*

BOTTOM ROW: Phyllis Cannon, Jean Harlan, Eleanor Ramsey, James Davis, Betty Chappell, Dan Click.

MIDDLE ROW: Elaine Baldock, Joe Tyler, Randall Smith, George Warner, Martha Neilander.

TOP ROW: Virginia Lee, Ovid Chambers, Jr., Patsy Patterson, Barbara Main.





## *Bowling Club*

BOTTOM ROW: Jane Wiswell, Betty Jo Dalton, Phyllis Fessler, Betty Hull, Barbara Carpenter, June Byers, Martha Nielander, Betty Chappell, Margaret Rose Hall, Mary Lee Edwards, Mary Sharp, Alice Ann Wise.

SECOND ROW: Alice Jessup, Helen Jackson, Virginia Harter, Jane Chapman, Iris Cooper, Virginia Lee Carmack, Peggy Dalton, Ruth Newman, Edythe Shapiro.

THIRD ROW: Kathryn Caron, Rosemary Jackson, Phyllis Conrad, Phyllis Heck, Charis Bryan, Beverly Skaggs, Rilla Millikan, Betty Browning.

TOP ROW: Juanita Burgess, Betty Jane Yost, Donna Tower, Betty Armstrong, Dorothea O'Rear, Rose Sampley, Donna Garnet, Mary Rector, Maxine Carter, Evelyn Smith.

## *Safety Club*

BOTTOM ROW: Marilyn Dinkins, Gladys Gilbreath, Ogretta Cole, Maxine Patterson, Nelma Corder, Beverly Brown, Bernice Fowler, Thelma Cline, Betty Chappell, Odell McWhorter.

SECOND ROW: Kathryn Waln, Josinah Brown, Priscilla VanHoose, Annabelle Owens, Juanita Brown, Maxine Carter, Virginia Clark, Ruth Pharis, Thelma Chandler.

THIRD ROW: Harriet Turpin, Jean Ryan, Ruth Utt, Helen Beam, Barbara Bunch, Daisy Neal, Ruth Kemp, Doris Reynolds.

TOP ROW: John Morgan, Bill Burk, James Adams, John Kennedy, Max Elliott, Earl Darling, Grover Ledbetter, Bob Polk, Janis Goar, Jacque Leffler, Bob Griffin, Edwin Lee, Glenn Crandall.

## *Nature Club*

LEFT TO RIGHT: LaDonna Holloway, Donna Griffin, Edna Tungate, Priscilla VanHoose, Barbara Byers, Betty Hendricks, Catherine Waln, Cecil Harmon, Miss Florence Smith, Betty Polk, Charles Caldwell, James Scott, Douglas Goerman, Bill Lake, Harold Weaver, Mary Jane Hogue, Harriet Turpin, Jean Morgan, Ruth Howard.

## *Projectionists Club*

BOTTOM ROW: Ralph Sanderson, Don Wardlow, James Vaughn, Wilfred Brosey.

SECOND ROW: Charles McMillan, James Craig, Howard Moystner, Homer Corum, Wilbur Stairs, Benton French.

THIRD ROW: Chester Conwell, Rex Martin, C. W. Nichols, Wilbur Veach, Jack Bloom, Marvin Frary, Jr. Whalen.

FOURTH ROW: Herbert Shelley, Frank Hagerman, Bill Harding, Martin Harlan, Bob Kirby, Bud Young, Bobby Bassett.

TOP ROW: Floyd Mastin, Edwin Lee, James Boyer, Vernon Gwinn, Forrest Davis, Ivan Hodson, Paul Lewis, Glenn Crandall, Forrest Tungate, Robert Shaffer, Dale Brown.



## *Drama Reigns*

Members of the largest club of N. H. S. donned grease paint often this year. They presented four plays for civic organizations and three for themselves. The last semester, the club put aside all other activities and concentrated on the Senior Class Play. Highlight of the year was the club presentation of the "Melodrama Revue."

## *Senior Class Play*

A decided hit was the Senior Class Play, "Young April," a former Broadway hit, by Auran-ia Rouveral and William Spence Rouveral. The play, which is a sequel to "Growing Pains," centers around the glorious misery of the love life of the young McIntyres and their friends. Everything turned out happily and the audience went home happy. The story was set before a background representing a buff-colored patio, splashed with gay reds and green of Southern California.

### *Young April Cast*

BOTTOM ROW: Phyllis Cannon, Jean Harlan, Eleanor Ramsey, James Davis, Betty Chappell, Dan Click.

MIDDLE ROW: Elaine Baldock, Joe Tyler, Randall Smith, George Warner, Martha Neilander.

TOP ROW: Virginia Lee, Ovid Chambers, Jr., Patsy Patterson, Barbara Main.





## Science Society

The Science Society members were studying this year with an eye to contributing actively to war work. Interest was stimulated by programs on unusual scientific themes. Outstanding program of the year was a lecture on astronomy and astrology complete with horoscope readings for the very scientific and unsuperstitious members of the Society.



## Machinists' Club

The Machinists' Club is New Castle High School's most recently organized social group. It was sponsored to give advantages of desirable social responsibility to Machine Trade students. All students enrolled in the Machine Trades Course are members.

Two club divisions recognize the status of students. These are Junior Machinists and Senior Machinists.



## Latin Club

The members of the Latin Club this year have achieved a deeper understanding of our heritage of Roman culture with many a lively program, including a dramatization of a Roman school, lectures and movies on Rome, New Year's resolutions, and plays in Latin. To climax the year a traditional Roman banquet was eaten in the costume and sumptuous style of old Rome.



## Spanish Club

"That South American way" definitely held sway at the Spanish Club meetings the first semester of this year. There were approximately fifty members meeting in the library on the second and fourth Thursdays of each month. The aim of the organization is to learn more about the people, customs, and language of Spanish-speaking nations. Some very interesting programs were given.





## *Science Society*

BOTTOM ROW: Ida Mae Hudson, Janet Martin, Martha Lee Hogue, Dorothy Ellen Caldwell, Rody MacDonald, Robert Vivian, Joy Davis, Robert Cox, Betty Jacoby, Wilma Huckelby, Nellie Hedrick, Virginialee Carmack, Martha Nielander.

SECOND ROW: Gene Strong, Donald Wardlow, Robert Crauder, Joe Tyler, Lois Conwell, Floyd Mastin, Marvin Frary, Beverly Christ, Elsie Meggs, Elva Martin.

THIRD ROW: Mr. George Bronson, Robert Shaffer, Charles Caldwell, Billy Brown, Ralph Estell, Melvin Wilkinson, Forrest Davis, Mr. Ivan Hodson.

TOP ROW: George Misener, Ted Roach, Robert Hubbard, Charles Popplewell, Henry Covert, James Davis, Dan Click, Tom Lester, Lewis Farmer, Bruce Leakey.

## *Machinists' Club*

BOTTOM ROW: Bill Rawlings, Charles Robinson, Frances Pollit.

SECOND ROW: Ernest Dege, Bob Platts, Don Sidwell, Charles Osborn, James Kinsinger, Walter Cline, Charles Latham.

THIRD ROW: Walter Nemeth, Forrest Tungate, Bill Mullen, Victor Rice, Charles Brown, Leo Rhodhamel, Donald Archey.

TOP ROW: Wayne Glad, Bill Shelley, Frances Thompson, Paul Spicer, Frank Pfenniger, Rudolph Jolley, Robert VanZant, Noel T. Myers.

## *Latin Club*

BOTTOM ROW: Richard Dicken, Richard Smith, Rex Martin, Bill Ingersoll, John Howren, Bill Heck, Bob Longwith, Joe Buggle, Leland Macer, Bob Cook,

SECOND ROW: Gene Strong, Betty Polk, Marjorie Winkhart, Dorothy Furbee, Virginia Howard, Erma Wood, Louise Wilson, Beulah Hagerman, Wanda Phillips, Martha Overman, Elizabeth Davis, Charlene Hastings.

THIRD ROW: Miss Mable Hodson, Patricia Todd, Ethel Reavis, June Branham, Jean Harlan, Bernetha Bond, Ruth Tapscott, Dorothy O'Rear, Patricia Pea, Jeanette Thompson, Caroline Ballenger, Leana Funkhouser, Marjorie Carrinder, Dorothy Conwell.

FOURTH ROW: Gene Dickerson, John Wallen, Leoia Burris, Mary Redleman, Thelma Cline, Betty Armstrong, Phyllis Heck, Louise Harris, Beverly Skaggs, Martha Dunaway.

FIFTH ROW: John Morgan, Ralph Hodgins, Richard Archy, Jack Ingersoll, Morton Shapiro, Billy Jo Wright, Suzanne Teetor, Ruth Ann Jordan.

TOP ROW: Agnes Schetgen, Jimmie Scott, Jimmie Lee, James Vogel, Dale Stoops.

## *Spanish Club*

BOTTOM ROW: Patsy Kennedy, Freda Smith, Delores Winters, Jean Long, Beth Emery, Alice Ann Wisc, Barbara Carpenter, Mary Roy Kirkwood, Dorothy Devening, Norma Lee Andrews, Emogene Koger, Virginia Hiner.

SECOND ROW: Gloria Pearson, Alice Osborn, Zenda Fears, Nancy Hudson, Martha Ann Crandall, Mary Carnes, Jane Chapman, Louella Stevens, Mary Lou Andrews, Lois Arnold, Miss Pogue, Mary Jane Hogue.

THIRD ROW: Sattra Huffman, Helen Ast, Betty Lou Bailey, Jean Lineback, Clarice Reneau, Bernadine Covalt, Mary Pugh, Keith Klipsch, Dorothy Wedell, Gerald Gernstein, Joe Ramsey.

FOURTH ROW: Dorothy Brenneman, Lucille Conn, Richard Bancroft, Verlin Groves, David Diehl, Fred Yelton, Gerald Ratchliffe, James Van Matre.

TOP ROW: Doris Brenneman, Grover Ledbetter, Donald Spencer, James Howren, Jack Ingersoll.



## *Bowling Club*

BOTTOM ROW: Jane Wiswell, Betty Jo Dalton, Phyllis Fessler, Betty Hull, Barbara Carpenter, June Byers, Martha Nielander, Betty Chappell, Margaret Rose Hall, Mary Lee Edwards, Mary Sharp, Alice Ann Wise.

SECOND ROW: Alice Jessup, Helen Jackson, Virginia Harter, Jane Chapman, Iris Cooper, Virginia Lee Carmack, Peggy Dalton, Ruth Newman, Edythe Shapiro.

THIRD ROW: Kathryn Caron, Rosemary Jackson, Phyllis Conrad, Phyllis Heck, Charis Bryan, Beverly Skaggs, Rilla Millikan, Betty Browning.

TOP ROW: Juanita Burgess, Betty Jane Yost, Donna Tower, Betty Armstrong, Dorothea O'Rear, Rose Sampley, Donna Garnet, Mary Rector, Maxine Carter, Evelyn Smith.

## *Safety Club*

BOTTOM ROW: Marilyn Dinkins, Gladys Gilbreath, Ogretta Cole, Maxine Patterson, Nelma Corder, Beverly Brown, Bernice Fowler, Thelma Cline, Betty Chappell, Odell McWhorter.

SECOND ROW: Kathryn Waln, Josinah Brown, Priscilla VanHoose, Annabelle Owens, Juanita Brown, Maxine Carter, Virginia Clark, Ruth Pharis, Thelma Chandler.

THIRD ROW: Harriet Turpin, Jean Ryan, Ruth Utt, Helen Beam, Barbara Bunch, Daisy Neal, Ruth Kemp, Doris Reynolds.

TOP ROW: John Morgan, Bill Burk, James Adams, John Kennedy, Max Elliott, Earl Darling, Grover Ledbetter, Bob Polk, Janis Goar, Jacque Leffler, Bob Griffin, Edwin Lee, Glenn Crandall.

## *Nature Club*

LEFT TO RIGHT: LaDonna Holloway, Donna Griffin, Edna Tungate, Priscilla VanHoose, Barbara Byers, Betty Hendricks, Catherine Waln, Cecil Harmon, Miss Florence Smith, Betty Polk, Charles Caldwell, James Scott, Douglas Goerman, Bill Lake, Harold Weaver, Mary Jane Hogue, Harriet Turpin, Jean Morgan, Ruth Howard.

## *Projectionists Club*

BOTTOM ROW: Ralph Sanderson, Don Wardlow, James Vaughn, Wilfred Brosey.

SECOND ROW: Charles McMillan, James Craig, Howard Moystner, Homer Corum, Wilbur Stairs, Benton French.

THIRD ROW: Chester Conwell, Rex Martin, C. W. Nichols, Wilbur Veach, Jack Bloom, Marvin Frary, Jr. Whalen.

FOURTH ROW: Herbert Shelley, Frank Hagerman, Bill Harding, Martin Harlan, Bob Kirby, Bud Young, Bobby Bassett.

TOP ROW: Floyd Mastin, Edwin Lee, James Boyer, Vernon Gwinn, Forrest Davis, Ivan Hodson, Paul Lewis, Glenn Crandall, Forrest Tungate, Robert Shaffer, Dale Brown.



## Bowling Club

Strike! another season has "gone down the alley" for the only unsponsored club in N. H. S. Formed by girls who like to bowl, this club affords its members the opportunity to enjoy this sport with their school friends. Competition reigns high every Tuesday when aspiring girl bowlers challenge each other on the local bowling alleys.



## Nature Club

The flowers and the trees  
The birds and the bees,  
become fascinating study to the members of the Nature Club. By means of microscope, field trips, and laboratory work, they learn about the things that live all around us.



## Safety Club

The whir of a siren, the imaginary drone of planes, and N.H.S. students proceed in an orderly manner to their posts of safety. All this is planned and executed under the direction of the Safety Club, whose members act as air raid wardens, first aiders, and other emergency officers. This club makes itself one of the most useful in school by studying and practicing wartime safety measures.



## Projectionists Club

The projectionists are boys who go to the study hall teacher at the beginning of a period with passes and say that they are going to show a picture for Mr. Hodson's class or Miss Pinnick's class, and then walk out with the envy of all those remaining in their seats. These boys are taught early in the year how to operate the moving picture projector and thereafter show all the films for teachers who are using them for classes.







## *National Honor Society*

BOTTOM TO TOP: Mary Catherine Hiatt, Barbara Don Main, Betty Lou Cashner, Lois Shultz, Marjorie Stewart, Maryellyn Symons, Dorothy Ellen Caldwell, Martha Lee Hogue, Sponsor Catherine Ratcliffe, Robert Crauder, Melvin Wilkinson, Ida Mae Hudson, Rosemary Garvey, Winifred Caldwell, Eleanor Ramsey, Susan Long, Virginia Lee.

The membership of the National Honor Society is chosen by the faculty according to their scholarship, character, leadership, and service. It comprises not more than fifteen per cent of the 12A class, not more than ten per cent of the 12B class, and not more than five per cent of the 11B class.

The members serve as ushers for all school convocations; they provide the hall patrol in the school building; they issue a list of all students on the honor roll each grading period; and they keep a school scrap book, which makes a fine history of all school activities.

## *Officers*

### FIRST SEMESTER:

Betty Lou Cashner	President
Dorothy E. Caldwell	Vice-President
Eleanor Ramsey	Secretary
Mary Catherine Hiatt	Treasurer

### SECOND SEMESTER:

Lois Schultz	President
Barbara Main	Vice-President
Ida Mae Hudson	Secretary
Rosemary Garvey	Treasurer



## Our Robed Choir

The thirty-eight members of the New Castle High School robed choir are directed by Miss Dorsey. They participated in many activities during the school year. This season they sang in special concerts for the State Teachers' Association, the Spring District Choral Festival, the Christmas pageant, the annual Crescendo Varieties, and Senior Vespers.

If we were sitting through a rehearsal we might hear bits such as the following:

*Now let's take those last three bars over a-again . . . altos, keep on pitch . . . everyone have a way over to State Teachers' Association? . . . remember, no music! . . . don't forget to come down Monday morning to sing for the Bible program . . . put all your robes back in the closet until next year.*

FRONT ROW: Marjorie Stewart, Beverly Keller, Louise Ratcliff, Dorothy Furbee, Dorothy Davis, Wanita Williams, Lois Arnold, Norma Lee Andrews, Rosemary McMullen, Charlotte Supinger, Mary Lou Andrews, Mary Ellen Gauchet, Dorothy Cairns, Alice Ann Wise, Betty Hendricks.

MIDDLE ROW: Mary Roy Kirkwood, Ernest Lineberry, Max Locker, William Lake, George Warner, James Crane, Miss Dorsey, Forrest Davis, Robert Shaffer, Herbert Shelley, George Reavis, Melvyn Culross, Phillip Heilman.

BACK ROW: Elizabeth Emery, Martha Ann Crandall, Wanda Cairns, Dorothy Devening, Martha Nielander, Ethel Reavis, Norma Jean Scott, Mary Alice Townsend, Barbara Kaye, Barbara Moore.





## *Boys' Glee Club*

BOTTOM ROW: Herbert Shelley, George Burden, Robert Shaffer, Robert Allen, John Doyle, Melvin Culross, Dick Lineberry, Martin Harlan, Bill Harding.

SECOND ROW: Forrest Davis, Bill Kirby, James Crane, Donald Clark, Richard Archey, Charles Dorsett, Paul Ellis, Macy Wardlow, Joe Ramsey.

THIRD ROW: Director William D. Kleyla, Junior Keith, Junior Carrender, Phillip Heilman, Jimmy Hutchens, John Keith, George Reavis.

TOP ROW: Robert Baldock, Darrell Winters, Rudcif Jolley, Bill Lake, Robert Crauder.

## *Crescendo Club*

BOTTOM ROW: Sherwood Ryan, Erma Wood, Bette Rose Cook, Patsy Ruth Thompson, Betty Zeller, Jean Long, Beth Emry, Lois Arnold, Mary Lou Andrews, Dorothea O'Rear, Betty Armstrong, Louella Stevens, Sattre Huffman, Phyllis Fessler, Joe Ramsey.

SECOND ROW: Mr. William D. Kleyla, Patsy Patterson, Phyllis Morris, Betty Hull, Dorothy Devening, Jean DeArmond, Louise Ratcliff, Norma Jean Scott, Marjorie Miller, Toby Roth, Jean Lineback, Beverly Keller, Janelle Bailey, Erline Smith, Miss Mae Dorsey.

THIRD ROW: Phyllis Nutty, Paul Mills, Martha Ann Crandall, Suzanne Teetor, Bernetha Bond, Janis Goar, Martha Nielander, Mary Alice Townsend, Betty Cashner, Phyllis Copeland, Carolyn Ballinger, Bob Shaffer.

FOURTH ROW: Bette Browning, Lova Moore, Frieda Mendenhall, Bonnie Lou Conn, Lois Shultz, Dorothy Cairnes, Barbara Kaye, Mary Redelman, Rilla Milikan, George Burden, Jimmy Scott.

TOP ROW: Ovid Chambers, Jack Payne, Melvin Culross, Wilbur Stairs, Buddy Thompson, Bobby Dugan, Donald Furbee, John Morgan.

## *Girls' Glee Club*

BOTTOM ROW: Jerry Wilson, Helena Harshbarger, Joan Nolly, Eileen Jenkins, Wanda Cairnes, Wau-nita Williams, Dorothy Davis, Rosemary McMullen, Colleen Moulden, Mary Alice Townsend, Marjorie Stewart, Betty Hendricks.

SECOND ROW: Beverly Keller, Ruth Ann Jordan, Marilyn Winning, Betty Jane Yost, Gae Jones, Maryellen Gauchat, Lois Arnold, Nancy Hudson, Patricia Pea, Gloria Pearson, Lucille Conn, Nida Garner, Rosenell Marks, Lois Cable, Peggy Hudson, Dorothy Brenneman, Doris Brenneman.

THIRD ROW: Dorothy Cairnes, Thelma Chandler, Louise Knight, Barbara Moore, Jean Harlan, Virginia Howard, Mary Roy Kirkwood, Evelyn Gooch, Betty Jean DeArmand, Jo Dalton, Phyllis Fessler, Dorothy Zirkle, Louise Ratcliff, Helen Duckworth, Jean Lineback, Margaret Rose Hall, Norma Lee Andrews.

FOURTH ROW: Donna Davis, Dorothy Furbee, Bonnie Swindell, Betty Zeller, Ruth Tapscott, Rose Sampley, Beetty Luellen, Wilma Pollitt, Barbara Walker, Norma Jean Scott, Marjorie Miller, Violet Kennedy, Helen Hudson, Ruth Pharis, Jane Chapman, Bonnie Conn, Alice Ann Wise, Mary Jane Hogue.

TOP ROW: Maxine Carter, Mary Kalk, Phyllis Copeland, Mary Redleman, Marjorie May, Martha Maple, Juanita Burgess, June Branham, Martha Ashby, Martha Purvis, Catherine Caron, Wanda Phillips, Dorothy Devening, Helen Ast, Louella Stephens, Suzanne Teetor, Sattre Huffman, Ethel Reavis, Mary Lou Andrews, Beth Emry.

## *"B" Band*

BOTTOM ROW: Bonita Wright, Marjorie Lewis, Jane Dillman, Joyce Crauder, Doris Hodgins, Harold Franklin, Janet Kennedy, Eddie Arnold, Louis Poin-dexter.

SECOND ROW: Barbara Holloway, Jewell Wright, George Sweigart, George Burden, George Reavis, Virginia Hutchens, Howard Moystner, Gene Strong, Richard Archey, Otto Bailey, Rex Bailey, Phillip Heilman.

THIRD ROW: Sarah Sheppard, Elizabeth Davis, Madeline Buck, Richard Whitten, Keith Davis, John Kinsinger, Bob Kirby, Stanley Harding, David Day, Morton Dann, Gene Worthington.

FOURTH ROW: Beverly Ann Winning, Paul Wright, Bob Longwith.



### *Boys' Glee Club*

The Boys' Glee Club is composed of boys who like to sing. This group took part in the Christmas pageant, "Crescendo Varieties" and other programs during the year.



### *Girls' Glee Club*

White blouses and dark skirts are symbolic of this organization. It comprises 115 girls ready to give their bit of song. They took part in the Christmas pageant, spring concert, and "Crescendo Varieties."



### *Crescendo Club*

This group is about fifty members strong with recruits from band, orchestra, choir, glee club or anyone with a liking for music. Crescendo Club sponsors annually a show, "Crescendo Varieties." In past years they have used profits to buy the music department a new piano and other valuable additions.



### *"B" Band*

Future musicians of N. H. S's band and orchestra are now members of the "B" band. Many in this group are still in Junior High School. It is because of the thorough training in "B" band that students are well prepared for the high standards of our musical organizations.





# *N. H. S. Music Department Combines*

During the fourth hour rehearsal period you might hear: "Clarinets, throw out your chewing gum: basses, get in tune; trombones are sharp; drummers, stop swinging it; well, it might help if you would take your music home and practice."

Highlights of the orchestra year and its major appearances began with the Christmas program and included music for the senior class play, baccalaureate, the spring concert, and "Crescendo Varieties." ("Maytime" and "Moonlight Becomes You" were our favorites for the "Varieties.") To end our successful year the orchestra played the ever-thrilling "Triumphal March" while the seniors came to receive their diplomas.

## *Orchestra*

The New Castle High School Orchestra is composed of forty-nine members playing every instrument that makes up a symphony orchestra.

FIRST ROW: Jack Payne, Paul Mills, Phyllis Copeland, Gloria Pearson, Marjorie Stewart, Suzanne Teetor, Janis Goar, Bonnie Conn, Ruth Ann Jordan.

SECOND ROW: Ralph Sanderson, Don Wardlow, George Burden, Erma Wood, Betty Rouse, Jane Chapman, Helen Ast, Louella Stephens, Marvin Culross, Bob Cox, Phyllis Nutty, Marilyn Payne, Betty Zeller.

THIRD ROW. Mary Lou Andrews, Martha Lee Hogue, Beth Emry, Janelle Bailey, Dorothy Higgs, Wilbur Stairs, Charles Dorsett, Ernest Guiling, Lova Moore, Betty Hull, Ruth Williams, Bob Allen, Dick Lineberry, Buddy Thompson, Bill Harding, Sattre Huffman, Martha Maple, Janet Teetor.

BACK ROW: Cathryn Goar, Lois Arnold, Mr. Kleyla, Gene Smith, Frank Stout, Jim Davis, Dorothy Furbee, Dorothy Devening, Patsy Patterson, Bud Chambers.





# Good Playing With Good Showmanship

Billy Kleyla's new white uniform inspired the members to observe his golden rules — hats an straight, instruments shined, feet flat on the floor, black ties, white sox.

The pep band urged the basketball team on to victory as they jazzed "Praise the Lord and Pass the Ammunition." At the home games we heard "Army Air Corps," "Over There" and "The Marines' Hymn," while Bud with new boots and a white shako wove his baton through the rafters. In starched white trousers we played a highly successful spring concert. We practiced every night for "Crescendo Varieties." Many will always remember its sparkling fanfares — "Italian Street Song," "Yankee Doodle," and "The Salute to the Allied Nations."

## Band

Our N. H. S. band with marching feet, bobbing plumes, prancing majorettes headed by a handsome drum major, filled our hearts with pride at every football game.

FRONT ROW: Melvin Culross, Ruth Ann Jordan, Paul Mills, Barbara Jordan, Bonnie Conn, Eleanor Ramsey, Dorothy Higgs, Louella Stevens, Patsy Thompson, Suzanne Teetor, Janis Goar.

SECOND ROW: Helen Ast, Jane Chapman, June Branhams, Freda Mendenhall, Phyllis Copeland, Mabel Sanderson, Kenneth Sipe, LaDonna Holloway, Dale Cable, Joe Ramsey, Russell Coers, Robert Neff, Wilbur Stairs, William Lake, Charles Dorsett, Ernest Guiling.

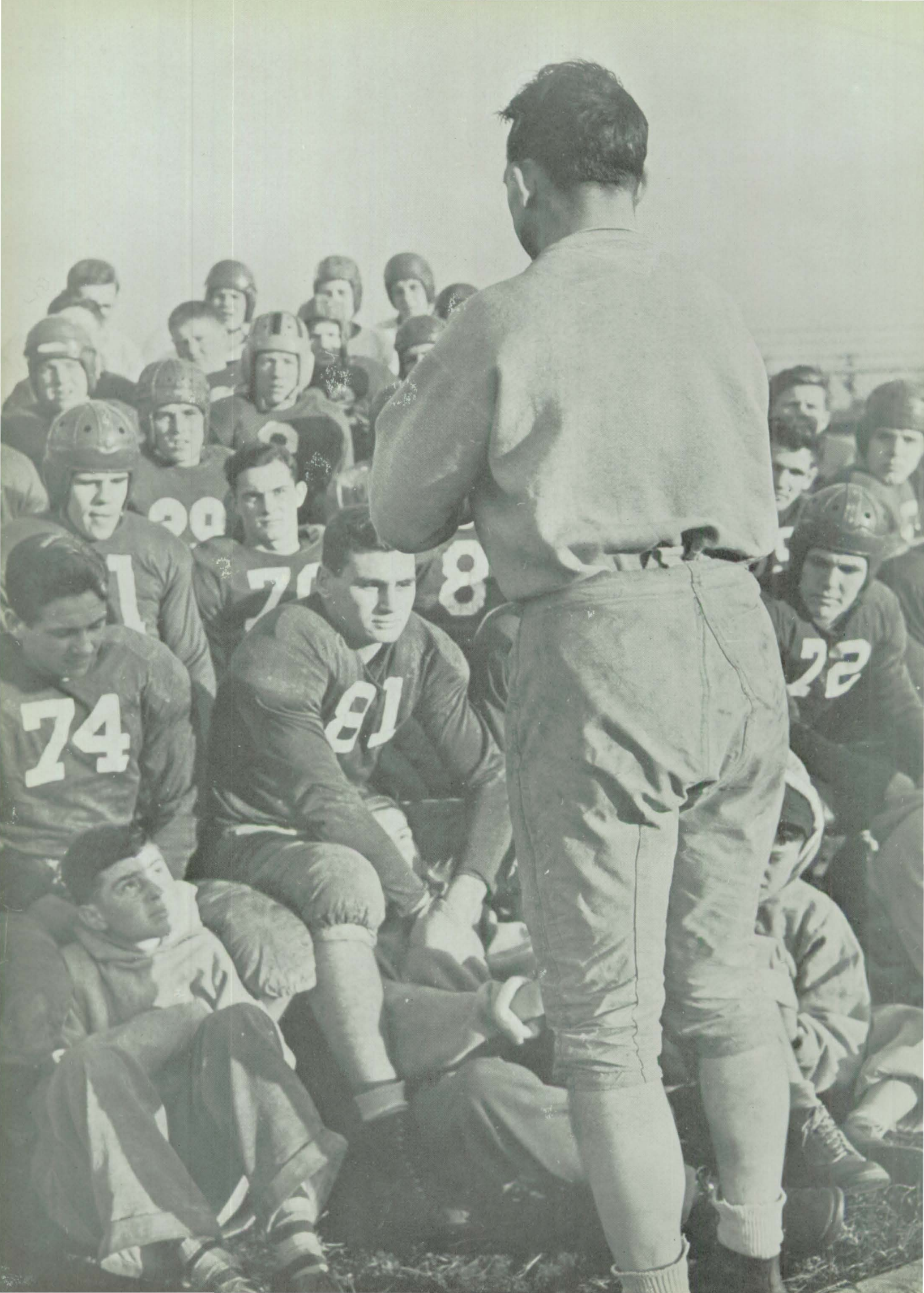
THIRD ROW: Buddy Thompson, Bill Harding, Bernetha Bond, Phyllis Fessler, Phyllis Morris, Sherwood Ryan, Sattre Huffman, Richard Johnson, Phyl-

lis Nutty, Ruth Williams, Betty Hull, Lova Moore, Betty Zeller, Carolyn Ballinger, James Crane, Jean Lineback, James Hutchens, Richard Lineberry, Eugene Lowder, Martin Harlan, Joe Foyst, Robert Robert Allen.

BACK ROW: Patsy Patterson, Adonis Thomas, Colleen Moulden, Mary Ann Sweigart, Mary Ellen Gauchat, Erlene Smith, Ovid Chambers, Kathryn Goar, Director William Kleyla, Mark Clay, Jack Payne, Ralph Sanderson, Raymond Mitchner, Marilyn Winning, James Antle, Frank Stout, Junior Whalen, Jean Smith.











## *News of the Athletic Field*

Playing the game is serious business say the boys on the athletic field. Behind those prominent "N's" they proudly wear, lie weeks, months, and years of strenuous training and sacrifice. We salute not only the varsity of N. H. S., but also the bench-warmers and second-teamers—the ball-carriers of tomorrow.





### *Yell Leaders*

Jean Cannon  
Howard Holloway  
Eva Kalk

## *Coaches, Yell Leaders,*

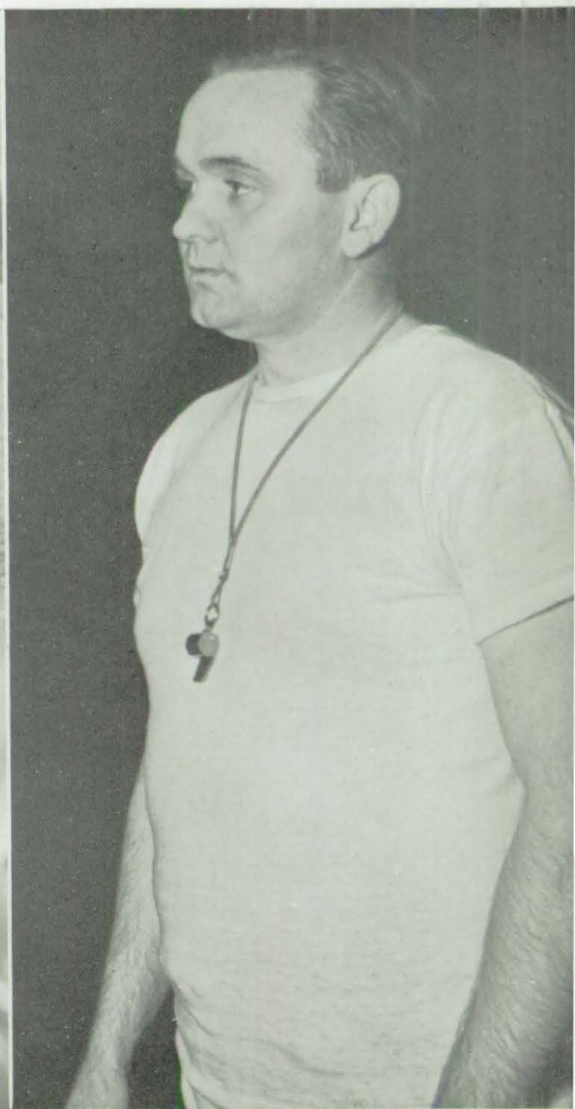
### *Coaches*

STEPHEN M. BAKER, Football

RANDALL LAWSON, track, assistant basketball and football.

JAMES R. ROGERS, assistant basketball and football

WILBUR N. ALLEN, basketball





## *and Varsity Club Lead Our Athletics*

BOTTOM ROW: Richard Kinsey, Dan Click, Harry Bell, John Stillwell, Henry Covert, George Barnard.

SECOND ROW: Mr. Baker, Dick McDonnell, Paul Lewis, Everett New, Don Sidwell, Bob Platts, Tom Lester, Wayne Coers, Mr. Allen.

TOP ROW: Eddie Sidwell, Lloyd Shaffer, Ernie Thompson, Herschell New, Chalmer Murnan, Charles McMillan, Lewis Farmer.





## *Outsized But Not Outfought*

Although outmanned as well as outsized, Coach "Griz" Baker's 1942 New Castle Trojan football team was never outfought.

Coach Baker had to depend heavily upon seven returning seniors, as the armed forces had taken Buddy Allen, Harold Bennett, and Dewey Mastin. Don Sidwell was scratched from the lineup because of a severe automobile accident, and a number of athletes left school to work in war plants.

With many players up from the freshmen and sophomore ranks taking the place of veterans that were playing on different fields, the Trojans opened their schedule against Morton Memorial, bowing to the hard-charging Cadets, 7 to 6.

This was followed by losses to Peru, Richmond, Rushville, Marion, and Anderson, with the Greencloths bouncing back to crush a mighty Bloomington Panther team, 21-13.

With only seven members leaving the roster, among them Ed Sidwell, Bob Platts, Ernest Thompson, Charles Wilt, Dan Click, Paul Lewis, and Dick McDonnell, 1943 Trojans should fare better.

It has been said, "The Trojans, like the Marines are able to take it, turn around next fall and like the Marines, dish it out."





## *Football Team*

BOTTOM ROW: Bill Niles, John Ford, Tommy Underwood, Bob Preble.

SECOND ROW: Coach "Griz" Baker, Coach Randall Lawson, Paul Lewis, Dick McDonnell, Eddie Sidwell, Dan Click, Bob Platts, Ernie Thompson.

THIRD ROW: Coach James R. Rogers, Jimmie Lee, Rudolf Jolley, Lewis Farmer, David Davis, Everett New, Tommy Lester, Wayne Coers, Wesley White, Perry Wolfe.

FOURTH ROW: Charles Hudson, Russell Cleek, Albert Hienz, Billy Burk, James Adams, Donald Archey, Albert Alexander, Robert Polk.

FIFTH ROW: Ernest Dagley, Mark Justice, Bill Cartwright, Harold Stanley, Dick Murphey, Norman Vincent, John Mastin, James Boyer.

SIXTH ROW: Gerald Gernstein, Bill Kirby, Leo Beatty, Dick Cronk, Jack Peckinpaugh, Bob Helms, Bill White, Roscoe Keesling.

TOP ROW: Jimmy Spera, Tommy Waggoner, Wendel York, Russell Furbee, Dick Tully, Danny Grunden, Bill Shelly, Dick George, Tom Irelan, Gene Allen.



## *The Line-Up*

ED SIDWELL — Bear was captain and biggest man on the squad. He led the scoring with 40 points . . . BOB PLATTS — A two year veteran on Coach Baker's team, Bob opened his senior year playing end . . . DICK McDONNELL — Moving to Indiana from Nebraska in his senior year, Dick started the season at halfback, but switched to quarterback . . . DAN CLICK — Laid up a good deal of his final season with an injured knee, Dan nevertheless threw all of his 165 pounds into the fray . . . PAUL LEWIS — A reserve wingman, Farmer was one of the hardest-working athletes on the squad . . . ERNEST THOMPSON — A senior tackle who gave all he had and was always in the thick of things . . . JOHN MASTIN — First of a great group of freshmen . . . RUDOLPH JOLLEY — Perhaps the best defensive man on the team, Rudy, a Junior, will be back next year to hold down one end slot . . . BILL BURK — Hampered somewhat by a bad leg, Burke doubles in the backfield or on the line . . . TOM LESTER — A transfer from Mt. Summit High School, Tom scored a touchdown in the first game he played . . . RUSSELL CLEEK — A midget compared with the rest of the team, Rusty started several games at guard and made up for his size with his fighting spirit . . . LEO BEATY — The most promising line buster in many years is the verdict of many sportscribes . . . WAYNE COERS — A Junior, Chesty will probably be found in next year's starting backfield because of his extreme speed and artful dodging . . . HERSHEL NEW — Hersh plays either guard or quarterback . . . LEWIS FARMER — A 195 pounder, Lewis started several games at tackle last fall . . . DICK CRONK — Another promising Freshman who was the regular wingback and handled the punting chores . . . JIM LEE — A Sophomore candidate for a guard post, Jimmie developed quickly as the season progressed . . . NORMAN VINCENT — A Sophomore halfback, Pee Wee never stopped to run around a man, but always tried to take his 135 pounds over the would-be tackler . . . AL ALEXANDER — Substitute quarterback, Alec used his 160 pounds to advantage when blocking opposing players . . . ERNEST DAGLEY — A deadly tackler as well as a sure-fire pass receiver, Dag will no doubt start at an end position next season . . . BOB POLK — A reserve lineman, Polkie stopped many charges with a bruising display of tackling . . . BILL CARTWRIGHT — Another candidate for an end position, a constant worker . . . DICK MURPHY — He started the season at center and shifted thereafter to wherever he was needed most . . . CHARLES HUDSON — A capable and fast Sophomore halfback . . . HAROLD STANLEY — A Junior end who gave all he had whenever he got in the game . . . DAVE DAVIS — A shifting, versatile Junior halfback, Dave will be one of the main threats of next year's ball club if he doesn't leave us to enter the armed services.



Eddie Sidwell

Bob Platts  
Dick McDonnell

Dan Click  
Paul Lewis  
Ernest Thompson

John Mastin  
Rudolf Jolley

Bill Burk  
Thomas Lester  
Russell Cleek

Leo Beaty  
Wayne Coers

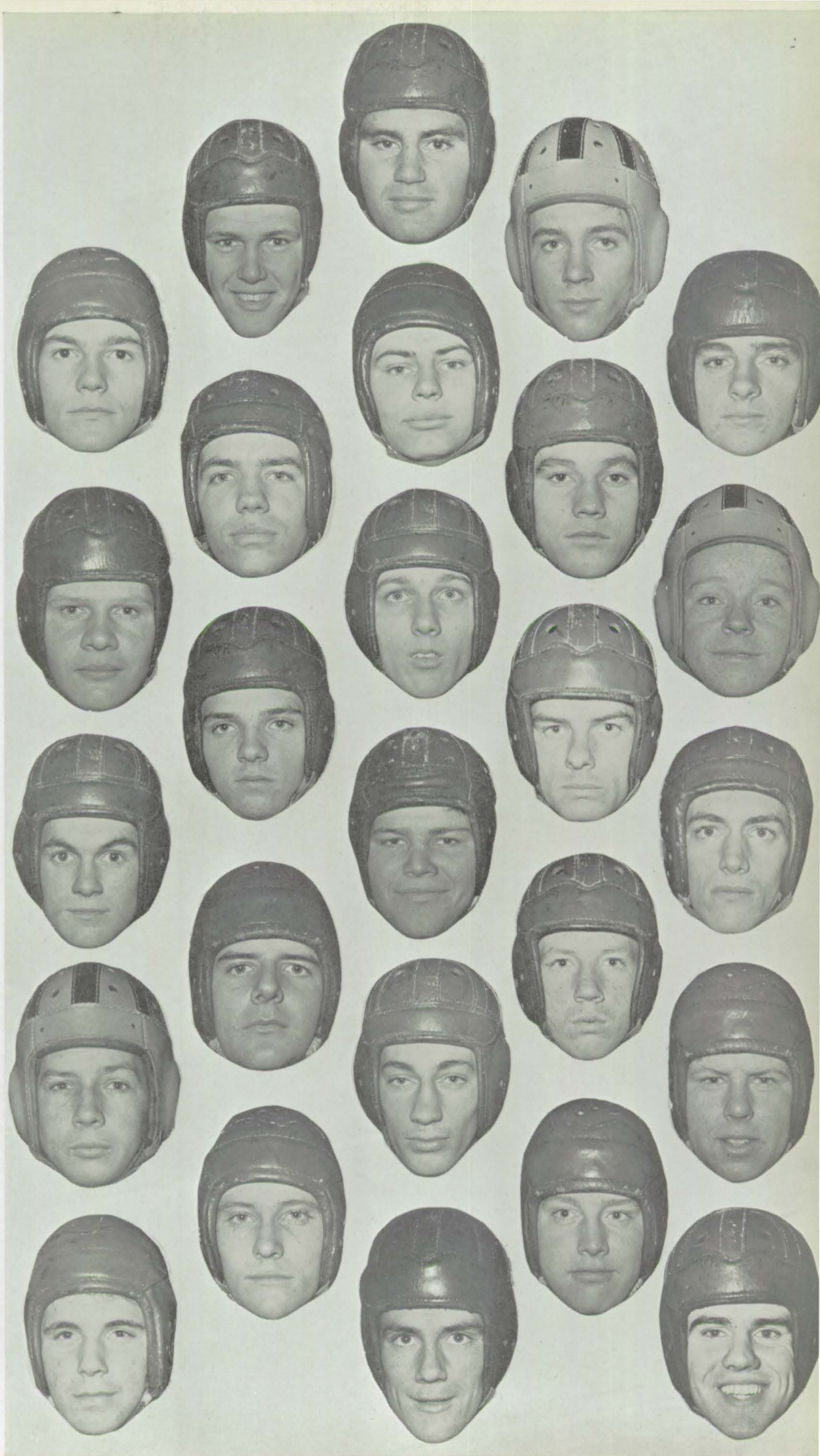
Everett New  
Lewis Farmer  
Dick Cronk

Jimmie Lee  
Norman Vincent

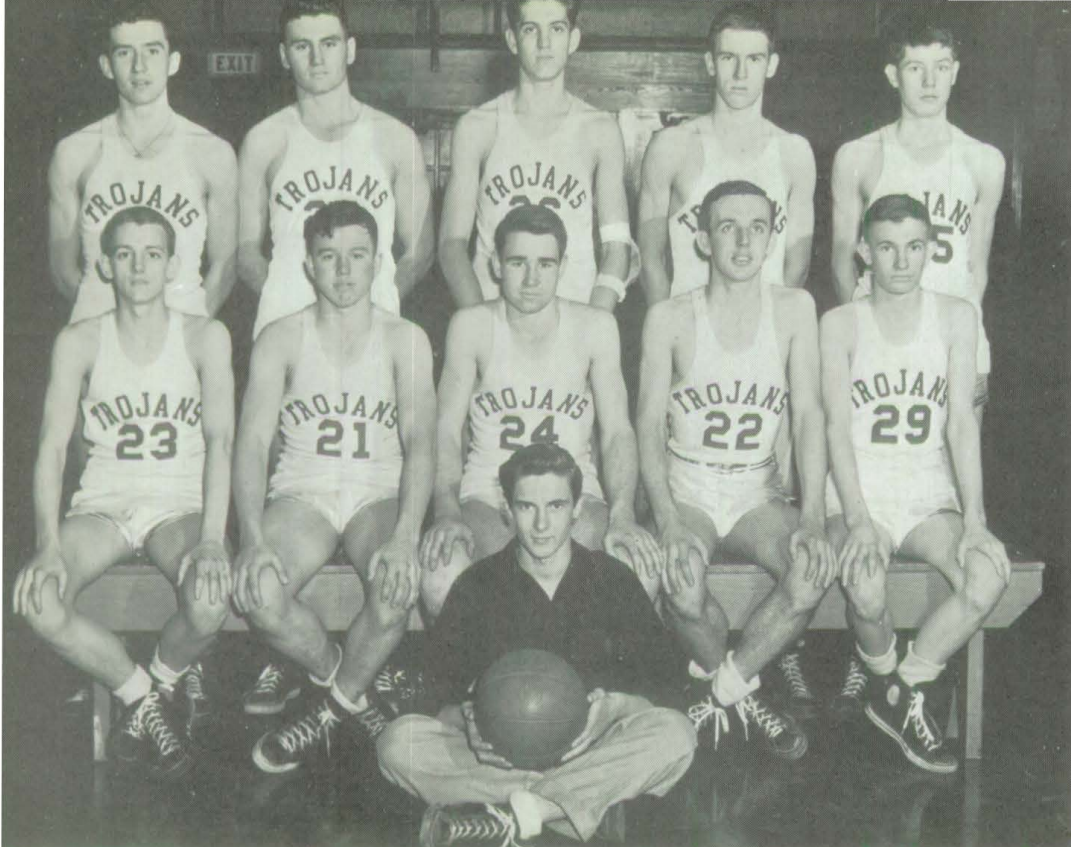
Albert Alexander  
Ernest Dagley  
Bob Polk

Bill Cartwright  
Dick Murphy

Charles Hudson  
Harold Stanley  
David Davis







### *First Team*

BOTTOM ROW: Phil White, John Stillwell, captain Lloyd Shaffer, Harry Bell, Wilbur Veach.

TOP ROW: George Barnard, Eddie Sidwell, Charles McMillan, Henry Covert, Gene Witt.

SEATED, FRONT ROW: Joe Tyler, student manager.

## *"Not Finished Just Begun"*

"Not finished, just begun," the senior class motto, easily describes the 1942-43 New Castle Trojan basketball team.

Although plagued by accidents and misfortunes which took all but one player from the original squad of five returning lettermen, the Trojan basketball team developed into one of the outstanding hardwood aggregations to pace the Indiana floors.

Of five returning lettermen only Lloyd Shaffer was fit to play the entire season. Jean Mathes, supposedly the spearhead of this year's team, was killed; Haskell Tompkins left school; while the Sidwell brothers, Don and Ed, were scratched from the roster with broken arms.

With only three seniors in the fold—Shaffer, Harry Bell, and the injured Ed Sidwell—Coach Wilbur "Strings" Allen had to bring George Barnard, John Stillwell, Charles McMillan, Henry Covert, Wilbur Veach, Phil White, and Gene Witt up from last year's second team.

Although rated a green team at the beginning of the year, the Trojans developed quickly and at the end of the past season were chosen as the tenth best team in Indiana, "The Home of Basketball," by a statewide survey of the leading sport scribes, because of their high offensive average against the state's top-notch teams.



## *The Scores*

56 - Hagerstown - 20  
26 - Jefferson of Lafayette - 22  
51 - Connersville - 49  
45 - Central of Ft. Wayne - 54  
32 - Anderson - 33  
47 - Tech of Indianapolis - 43  
42 - Burris of Muncie - 40  
27 - Richmond - 34  
67 - Rushville - 30  
"Big 4" Tourney at Logansport  
40 - Anderson - 42  
39 - Kokomo - 37  
36 - Muncie - 38  
41 - Kokomo - 32  
50 - Frankfort - 30

26 - Richmond - 33  
33 - Logansport - 35  
57 - Muncie - 35  
39 - Anderson - 38  
31 - Greenfield - 29

### Sectional Tournament:

50 - New Lisbon - 24  
64 - Mooreland - 24  
59 - Spiceland - 33

### Regional Tournament

41 - Burris of Muncie - 37  
26 - Richmond - 44

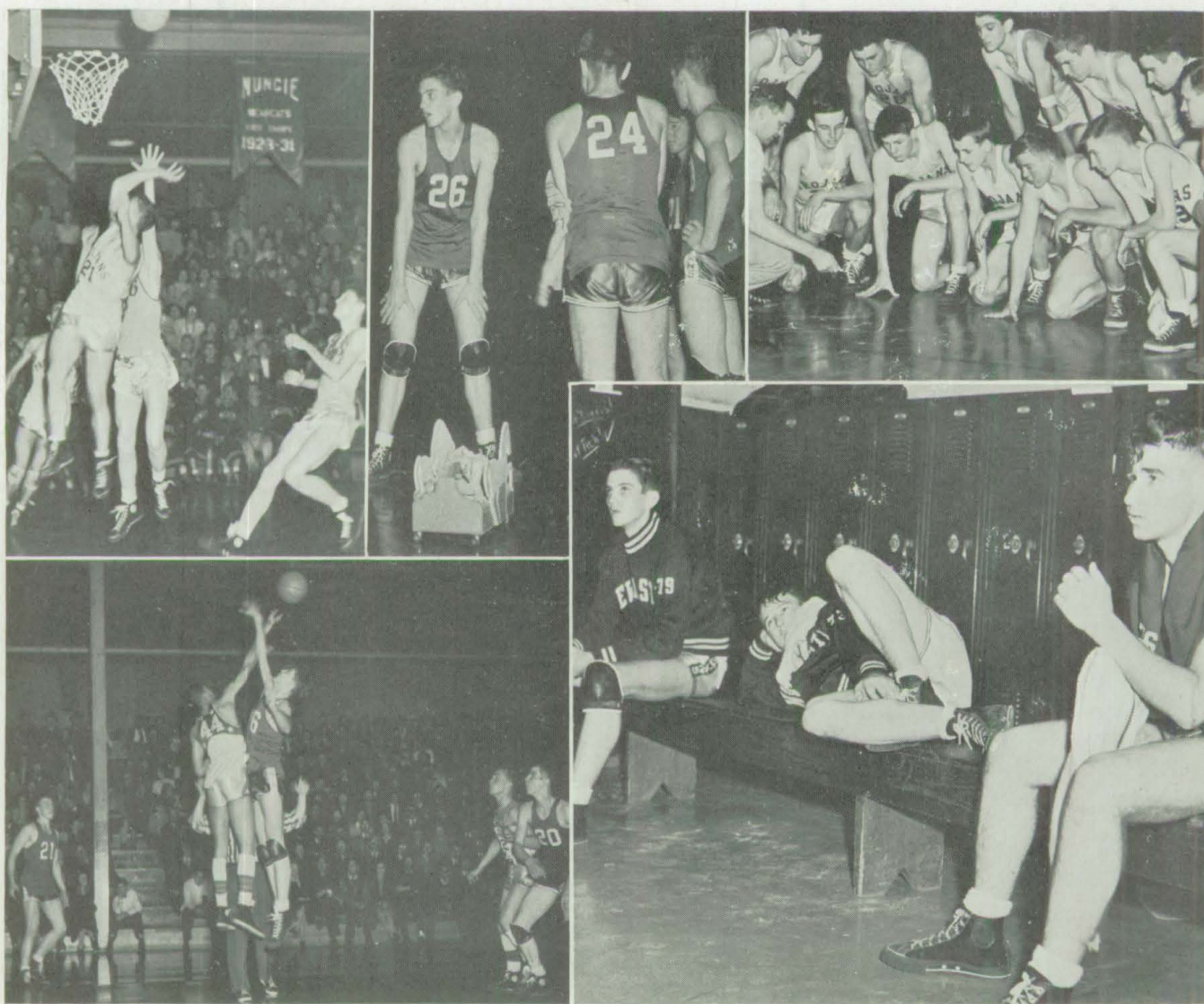
*"Let's beat 'em  
tonight, boys!"*





## *Our Trudgin' Trojans*

While the Russians plowed through their winter snows to push Hitler down in defeat, our own Trojans trudged through a hard season to beat down many superior teams. Our little speed-demon, Johnny Stillwell, breaks through to score against the state champs . . . the whistle blows and out rolls the Trojan horse cart to help revive the boys after a hard-fought quarter . . . "the boys" learn a few fine points from a fine coach . . . "high jump, stretch those limbs, Mac" . . . it's the half and another locker lecture.





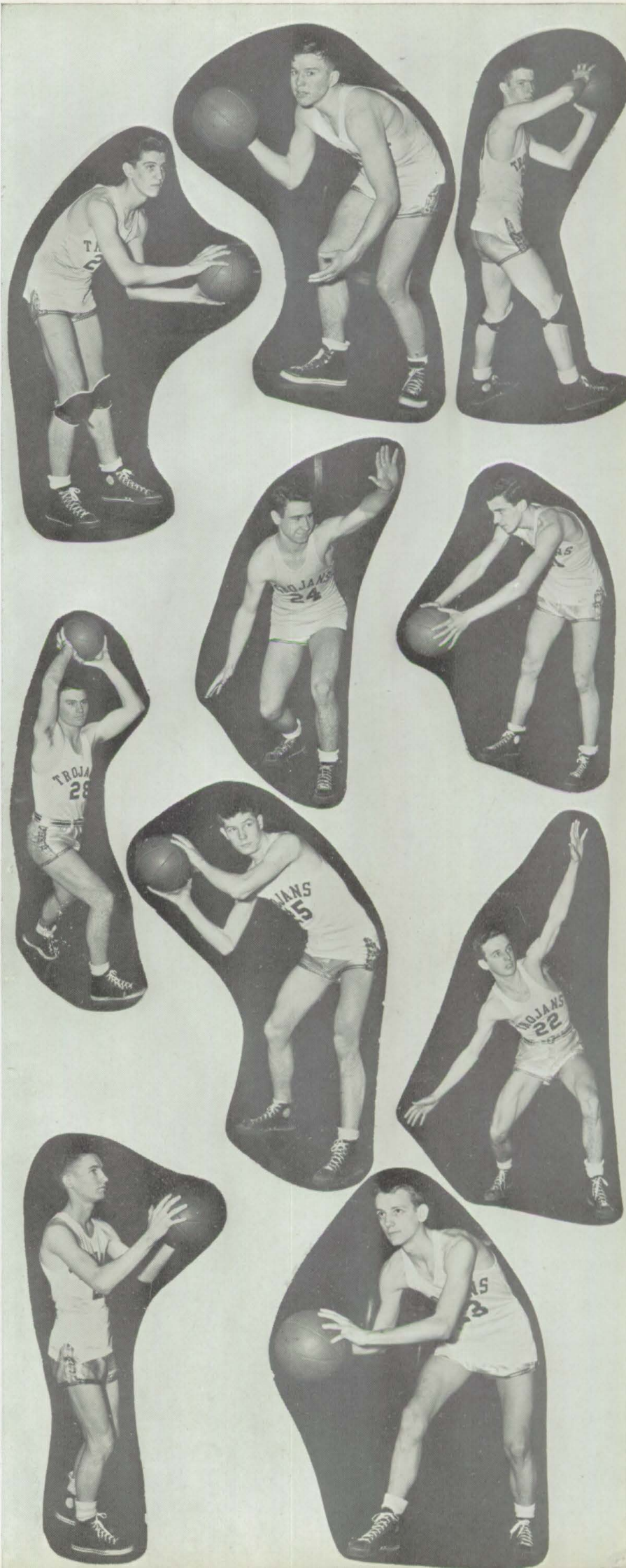
## *Seein' Stars*

Charles McMillan  
John Stillwell  
Henry Covert

Eddie Sidwell  
Lloyd Shaffer  
George Barnard

Gene Witt  
Harry Bell

Wilbur Veach  
Phillip White





## *Tomorrow's Hardwood Heroes*

These are today's Colts but tomorrow's Trojans. Under the guidance of Coach Randall Lawson, they have developed into a hard-scrapping, well-trained ball club, which offered the Varsity plenty of opposition.

### *Second Team*

BOTTOM ROW: Harry Burkhardt, Charles Hudson, Dick Cronk, Jim Vogel, Norman Vincent.

TOP ROW: Jim Lee, Glen Crandall, Harold Stanley, Charles Caldwell, Dale Taylor.

SEATED, FRONT ROW: Bob Longwith, student manager.







TOP PICTURE

Paul Ellis  
Albert Alexander  
Don Stoops



MIDDLE PICTURE

Ernest Dagley  
C. W. Nichols  
Wayne Coers  
Tom Walls



RIGHT PICTURE

Johnny Mastin



## Track Team

BOTTOM ROW: Herman Hill, Tommy Wall, Jim Wrightsman, Don Stoops, John Howern, Norman Vincent, Albert Heinz, Earl Thompson, Wayne Coers, C. W. Nichols.

SECOND ROW: Richard Kinsey, Roscoe Keesling, Tom Irelan, J. H. Payne, Paul Ellis, Donald Archy, Bill Ingersoll, Dick Cronk.

THIRD ROW: Paul Beard, Dale Stoops, John Mastin, Robert Crauder, Wilbur Stairs.

FOURTH ROW: Ernest Dagley, John Doyle, Bud Furbee, Dick George, Bill Kirby, Jim Spera, Russell Coers.

TOP ROW: Coach Lawson, Sam Kepner, Charles Chana, Leo Beatty, Albert Alexander, Donald Burke, Dan Click.

With eighty youths answering the first call for equipment, the new head track coach, Randall Lawson, assured New Castle that track was on the "up-swing" in the Rose City.

Although hampered seriously by the early season weather, Coach Lawson assembled a well-balanced, experienced cinder squad which was able to show with the best of teams.

Always able to bring the best out of a boy, Coach Lawson discovered several unknowns, who developed quickly and, along with the veterans, Ed Sidwell, Wayne Coers, Don Sidwell, and Dave Davis, helped pace the Trojans through their schedule:

Anderson - Here.  
Richmond - There.  
Rushville - There.  
Muncie Relays - There.

Cambridge City - There.  
Big Ten - Richmond.  
Sectional - Muncie.  
State Meet - Indianapolis.



## *Tumbling Team*

Norma Jean Scott, Betty Jean Zeller, Melba Cross, Eleanor Farmer, Mable Sanderson, Toby Roth, Agnes Rifner, Betty Everman, Marjorie Saunders, Marjorie Miller, Mary Ellen Stephenson.



## *Girls' Sports Club*

BOTTOM ROW: Glenna Boatright, Charlene Hastings, Maxine Carter, Donna Garnett, Anita Leonard, Norma Bowman, Alice Hole, Evelyn Smith, Louise Eden, Betty Crousore, Lela Ellington, Irene Dinkins, Maxine Carter.

SECOND ROW: Jean McKecknie, Carolyn Ballinger, Christine New, Martha Hudson, Daisey Neal, Beverly Skaggs, Mary Mitchell, Mary King, Naomi Cooney, Jenalle Harris, Wilma Huckleby, Christine Phipps, Ada Sheppard, Geraldine VanNatta.

THIRD ROW: Phyllis Holtzel, Mildred Broyles, Betty Hiatt, Sarah Ludy, Betty Lou Bailey, Leona Pfenniger, Eileen Jenkins, Joan Nolley, Betty Yost, Ruth Black, Ethel Poynter, Doris Swim, Barbara Byers, Eleanor Farmer, Nancy French, Marjorie Franklin, Mary Rifner, Lela Upchurch.

FOURTH ROW: Barbara Gauchat, Helen King, Rosetta Haynes, Donna Dudley, Barbara Lowery, Betty Everman, Mary Glynn, Marjorie Miller, Beulah Goid, Ada Turner, Jeanette Click, Frances Waln, Virginia Shumake, Jean Rice, Sponsor, Elizabeth Harrington.

FIFTH ROW: Allie Catron, Lena Watt, Ruth Utt, Joanne McFarland, Mary Kalk, Virginia Rhodehamel, Frances Meggs, Betty Walker, Margaret Newcomer, Lucille Thompson, Doris Burkhardt, Virginia Clark, Martha Stinson, Alma Wilson.

SIXTH ROW: Mabel Sanderson, Agnes Rifner, Ethel Boatwright, Betty Sampley, Naomi Larrimore, Opal Turner, Jean Morgan, Margaret Hickman, Mary Richter, Barbara Yost, Betty Waln, Dorothy O'Rear, Dorothy Weddel.

TOP ROW: Carole Buck, Annabelle Spannuth, Ruth Meggs, Helen Hudson, Catherine Caron, Wanda Phillips, Hazel Wilkinson, Phyllis Copeland, Marjorie Carrender, Norma Sidwell, Martha Purvis.





## Girls Enjoy A Varied Athletic Program

Besides physical education classes, a swimming class meets weekly at the "Y." Although not competitively active, the girls play basketball and other games during the halves of ball games.

One feature which will be long remembered was the student-faculty basketball games. Both boys and men and girls and women teachers took part in these uproarious games, sponsored by the Girls' Sports Club. The proceeds were given to the Red Cross.

Our photographer, Tom Petty, led by Miss Arford, took his camera to the various centers of activity. In the swimming pool he snapped these would-be mermaids in the water. Then he caught Winnie Caldwell posed for a dive.

In the locker room at the armory, Tom dodged the mad scramble to photograph the girls who seemed to take as much time tying their shoes as combing their hair.

The bottom picture shows some of the various exercises the girls practice in gym classes nowadays. These are the reason for much of the slow locomotion of the girls at the beginning of the semester. "Gym class, ouch!"







Engravings by  
 INDIANAPOLIS ENGRAVING CO.  
 Indianapolis, Indiana

Printed by  
 THE CENTURY PRESS  
 New Castle, Indiana



# The Roll

Numbers Indicate Pages Where Pictures Appear

## A

Allen, David, 46  
Allen, Gene, 46, 73  
Allen, James, 42  
Allen, Bobby, End Page, 65, 66,  
67, 46, 47  
Adams, Donald, 41, 52  
Addison, Barbara  
Adams, James, 73, 79  
Allen, Mr. A. D., 16, 20, 15,  
55, 53  
Alexander, Margaret, 45  
Alexander, Albert, 73, 39, 75  
Allen, Mr. W., 20, 70, 71, 77  
Allred, Florine, 26, 29, 83  
Andrews, Mary Lou, 61, 65, 56,  
59  
Andrews, Norma Lee, 61, 59, 46  
Antic, Thomas, 12, 39  
Antle, James, End Page, 67, 44  
Archie, Donald, 73, 39, 59, 11  
Archie, Richard, 59, 65  
Arford, Miss Louise, 21, 15  
Armstrong, Betty, 59, 42, 56, 65  
Armstrong, Wanda, 44  
Arnold, Lois, 61, 66, 59, 65  
Arthur, Viola, 45  
Ashby, Martha, 12, 47  
Ashley, Harold  
Ashley, Marietta, 39  
Askin, Marcella, 29  
Ast, Helen, End Page, 66, 67, 59  
Atkinson, Leland, 12, 29  
Atterson, Charles, 46  
Atwater, Richard, 46, 53  
Atwater, Roy, 46  
Auten, Gene, 39  
Axel, Georgia, 46

## B

Bailey, Betty, 59, 82  
Bailey, Janelle, 66, 46, 65  
Bailey, Mary, 29  
Bailey, Nila, 42  
Bailey, Norma, 46  
Bailey, Otto, 39, 65  
Baldock, Paul  
Baldock, Richard  
Ball, Helen  
Baker, Mr. A. O., 20  
Baker, Ernest, 42  
Baker, Stephen, 20, 15, 70, 71, 73  
Baldock, Delmar, 42  
Baldock, Elaine, 29, 26, 52, 56,  
57  
Baldock, Robert, 65  
Bales, Bill, 52, 39  
Ballenger, Carolyn, End Page, 67,  
59, 46, 65, 82  
Ballenger, Donna, 45  
Ballenger, Marilene, 29  
Bancroft, Dick, 59  
Banta, Mary, 15, 29  
Barnard, George, 52, 71, 39, 76,  
77, 78, 79  
Barnes, Olga, 12  
Bassett, Bobby, 44  
Bates, Martha  
Bavender, John  
Beal, Sarah, 29, 13  
Beam, Helen, 39, 61  
Beard, Paul  
Beatty, Leo, 73, 46, 75  
Bell, Harry, 14, 26, 29, 52, 71,  
76, 78, 79, 47  
Bell, Opal, 45  
Bennington, William  
Bergin, Don, 29, 52  
Bertram, Eugina  
Bertram, Merle, 46  
Bishop, Geneva, 45  
Bitler, Dr. C. C., 19  
Bittner, Don  
Black, Ruth, 82  
Blackburn, John, 52, 50  
Blackburn, Ruth, 46  
Blacksten, Betty, 29  
Blacksten, Don  
Bland, John, 53  
Bledsoe, Louise  
Blum, Jack, 29, 61

Boatright, Ethel, 82  
Boatright, Glenna, 46, 82  
Bolder, Dennis, 42  
Bond, Bernetha, End Page, 39, 67,  
59, 65  
Bouslog, Bryant, 29, 12  
Bowman, Norma, 46, 56, 82  
Boyer, Jim, 73, 56  
Branham, June, End Page, 67, 59  
Branscum, James  
Breckenridge, Bill  
Brennemen, Doris, 59, 46, 65  
Brenneman, Dorothy, 59, 46, 65  
Bronson, Mr., 16, 13, 22, 15, 59  
Brooks, Mr., 16, 20, 50  
Brookshire, William, 29, 52  
Brosey, Wilford, 46, 53  
Brown, Anna Louise, 39  
Brown, Beverly, 2, 61  
Brown, Bill, 59  
Brown, Charles, 29, 59  
Brown, Dale  
Brown, Dorothy, 46  
Brown, Josinah, 61, 44  
Brown, Juanita, 15, 29, 61  
Brown, Mary, 2, 50  
Brown, Maurice  
Browning, Bette, 39, 52, 61, 65  
Broyles, Marvin, 45  
Broyles, Mildred, 15, 46, 82  
Brumfiel, Bob, 42  
Brumfiel, Clarence, 29  
Bryant, Bill, 12, 39  
Buck, Carol, 82  
Budd, John, 46  
Buggle, Joe, 45, 59  
Bunch, Barbara, 38, 39, 61  
Bunch, Patsy, 42  
Burden, George, 65  
Burden, Vonnice  
Burke, Kenneth  
Burnett, Jack  
Bryan, Charis, 42  
Burk, Robert, 42  
Burr, Mr., 16, 21, 15  
Burgess, Juanita, 61  
Burk, Bill, 12, 38, 61, 73, 39, 75  
Burke, Don, 46  
Burkhart, Doris, 39, 82  
Burkhart, Harry, 2, 80  
Burris, Leola, 59  
Bruton, Elizabeth, 46  
Bush, Helen, 45  
Byers, Barbara, 61, 82  
Byers, June, 26, 29, 27, 52, 55,  
83  
Byrket, Doris, 39

## C

Cable, Dale, 52, 42  
Cable, Lois, 42, 65  
Cairnes, Dorothy, 29, 61, 65  
Cairnes, Wanda, 61, 42, 65  
Caldwell, Charles, 48, 61, 42, 59,  
80  
Caldwell, Dorothy, 29, 13, 26,  
52, 54, 55, 59, 62  
Caldwell, Eugene, 45  
Caldwell, Winifred, 6, 29, 50, 52,  
55, 62, 47, 83  
Cannon, Jean, 6, 8, 30, 2, 26,  
52, 55, 70, 83  
Cannon, Phyllis, 7, 30, 47, 57,  
56, 83  
Capshaw, James  
Capshaw, Judy, 45  
Carender, Marjorie, 46, 82  
Carlson, Wilbur  
Carmack, Virginia L., 30, 26, 61,  
56, 59, 83  
Carman, Mary, 46  
Carmichial, Jo Ann, 50, 42  
Carnes, Lois, 30  
Carnes, Mary, 12, 59, 42  
Carnes, Norma, 46, 50  
Caron, Catherine, 12, 2, 61, 42,  
82  
Carpenter, Barbara, 30, 61, 56, 59  
Carrender, Mary, 59  
Carter, Clarence  
Carter, Maxine, 12, 46, 82

Carter, Maxine L., 44, 82  
Cartwright, Barbara, 39, 55, 56  
Cartwright, Betty, 30  
Cartwright, Billy, 73, 42, 75  
Cartwright, Dwayne, 52  
Cashner, Betty, 30, 2, 26, 50,  
48, 52, 62, 65  
Cashdollar, James  
Cassady, John  
Cassity, Marguerite, 30, 14  
Catron, Allie, 46, 82  
Catron, Roena, 46  
Catt, Sherman, Jr., 46  
Chalfant, Jean, 30, 56  
Chambers, Ovid, End Page, 38,  
48, 52, 66, 67, 47, 56, 57,  
65  
Chance, Charles, 54, 45  
Chandler, Thelma, 39, 61, 65  
Chapman, Jane, End Page, 61, 66,  
67, 59  
Chappell, Betty, 30, 13, 26, 48,  
61, 56, 57  
Chappell, Marrill, 46  
Chenault, Charles, 46, 53  
Chenault, Evelyn, 39  
Chesher, Charles  
Chesher, Mildred, 12, 46  
Chesick, Katherine, 42  
Christ, Beverly, 59  
Clark, Audrey, 46  
Clark, Bill  
Clark, Donald, 46, 65  
Clark, Marvin, 50  
Clark, Virginia, 44, 82  
Clay, Mark, End Page, 67, 42  
Cleck, Russell, 73, 42, 75  
Clemmons, Helen, 46  
Clemmons, Ralph, 45  
Clemmons, Ruth, 30, 83  
Clevenger, Elmer, 45  
Click, Dan, 30, 7, 52, 71, 73,  
56, 57, 75  
Click, Jeanette, 46, 82  
Clifford, Miss, 16, 23, 15  
Cline, Richard, 52, 42  
Cline, Thelma, 39, 61, 41, 59  
Cline, Walter, 30, 59  
Coates, Scott, 46  
Coers, Russell, End Page, 50, 67,  
46, 53  
Coers, Wayne, 39, 52, 55, 71,  
73, 75, 80  
Cohee, Charlene, 56  
Cole, Oretta, 61, 39  
Collier, Betty  
Collingsworth, Adella  
Coleman, Wayne, 42  
Compton, Bob  
Compton, Joe, 53  
Conn, Bonnie, End Page, 66, 42,  
65, 67  
Conn, Lucille, 59, 42, 56, 65  
Conrad, Phyllis, 30, 61  
Conway, Harold, 50  
Conwell, Chester, 42  
Conwell, Dorothy, 30, 59  
Conwell, Lois, 30, 59  
Conwell, Robert, 42  
Cook, Betty Rose, 30, 52, 65, 56  
Cook, Bob, 59  
Cooney, Naomi, 82  
Cooney, Ruth  
Cooper, Iris, 30, 27, 55, 61, 56,  
83  
Copeland, Kathryn, 30, 66  
Copeland, Phyllis, End Page, 67,  
46, 65, 82  
Copeland, Tom  
Corder, Nelma, 14, 61, 42  
Corum, Homer, 12, 52, 61  
Cory, Junior, 30  
Cory, Ernest  
Cory, Max, 53  
Couch, Jama  
Covalt, Bernadine, 39, 59  
Covert, Henry, 10, 52, 71, 59,  
76, 77, 78, 79  
Covey, Ernest  
Cowan, Mary, 45  
Cox, Robert, 39, 52, 66, 59

Craig, Harold, 50  
Craig, Howard  
Craig, James, 2, 10  
Crandall, Glenn, 2, 61, 39, 80  
Crandall, Martha, 14, 63, 42, 59,  
65  
Crandall, Robert, 50  
Crane, James, End Page, 61, 67,  
47, 65  
Crauder, Robert, 30, 13, 24, 26,  
27, 54, 59, 62, 81, 65  
Craw, Mr., 16, 18, 15, 47  
Cronk, Doris, 42  
Cronk, Richard, 73, 46, 75, 80,  
81  
Cross, Melba, 46  
Crousore, Betty, 46, 82  
Crow, Jack, 10, 52  
Culross, Melvin, End Page, 61,  
66, 67, 47, 65  
Cunningham, Jamie, 45

## D

Dagley, Ernest, 73, 42, 75, 81  
Dalton, Betty Jo, 14, 50, 42, 4,  
61, 65  
Dalton, Peggy, 15, 6, 31, 13, 27,  
52, 54, 55, 61, 56, 83  
Dalton, Phyllis Jean, 42  
Dammron, Yvonne, 31  
Darling, Earl, 31, 61  
Davidson, Alfred, 42  
Davidson, Kermit  
Davis, David, 39, 52, 61, 73, 75  
Davis, Donald, 46  
Davis, Donna, 15, 46, 47  
Davis, Dorothy, 31, 65  
Davis, Edra, 39  
Davis, Elizabeth, 59, 46, 65  
Davis, Ernest, 42  
Davis, Floyd, 42  
Davis, Forrest, 8, 31, 52, 63, 48,  
59, 50, 65  
Davis, Irene, 42, 50  
Davis, Jackie, 45  
Davis, James, 31, 7, 26, 52, 66,  
67, 56, 57  
Davis, Jeanette, 31  
Davis, Joy, 10, 27, 48, 52, 59  
Davis, Kathryn, 46  
Davis, Marshall, 42  
Davis, Robert  
Davis, Thomas  
Deal, Patricia, 46  
DeArmond, Dollie, 31, 83  
DeArmond, Jean, 65  
Dege, Ernest, 31, 59  
Dehart, Roy, 42  
Denney, Beulah, 45  
Devening, Dorothy, 14, 7, 63,  
66, 42, 59, 65  
Devening, Joan, 46  
Dickens, Richard, 59  
Dickerson, Betty  
Dickerson, Eugene, 59  
Dickey, James  
Diehl, David, 52, 59, 42  
Dinkins, Irene, 82  
Dinkins, Mildred  
Dinkins, Raymond, 31, 10  
Dobbs, Bonnie  
Dock, Doris, 46  
Dorsett, Charles, End Page, 66,  
67, 65, 47  
Dorsey, Miss, 16, 21, 15, 63,  
47, 65  
Doyle, John, 12, 42, 65  
Dressler, Charles  
Duckworth, Helen, 52  
Dudley, Bobby  
Dudley, Boyden, 10, 52, 42  
Dudley, Donna, 42, 82  
Dugan, Bobby, 42, 65  
Dunaway, Martha, 59, 46, 83  
Dunaway, Philip, 39  
Duncan, Ruth, 42  
Durham, Elma, 31  
Durrell, Jack, 31, 50, 52, 54, 56  
Durrell, Jane, 12, 42  
Duvall, Evalena, 39  
Duvall, Paul



## E

Eden, Mrs. Harriet, 23  
Eden, Louise, 42, 82  
Edwards, Donald, 53  
Edwards, Mary Lee, 12, 61  
Ellington, Lela, 82  
Elliott, Max, 12, 39  
Ellis, Paul, 31, 10, 65  
Ellis, Virgil, 42  
Elwood, Raymond, 46  
Emery, Beth, 14, 7, 27, 63, 66,  
42, 59, 65  
England, Jessie  
Erhart, Bernard  
Erickson, Ann  
Estelle, Ralph, 42, 59  
Evans, Jimmy, 31  
Evans, Richard, 10  
Everett, Jack  
Everman, Betty, 42, 83

## F

Fairchild, Jimmy, Jr., 42  
Fannon, Clarence, 46  
Fannon, Georgia, 31  
Farmer, Eleanor, 82  
Farmer, Lewis, 55, 71, 73, 40,  
59, 75  
Fears, Zenda, 59, 44  
Fessler, Mr., 20  
Fessler, Phyllis, End Page, 61,  
67, 42, 65  
Field, Mr. George, 19  
Fine, Fred  
Fisher, Mrs., 16, 23, 15, 50, 48  
Fisher, Caroline, 40  
Fletcher, Herbert, 45  
Flinn, Margaret, 40  
Flowers, John, 42  
Flowers, Lois Jean, 42  
Floyd, Bernice, 42  
Ford, John, 73  
Foster, Delmar, 45  
Foster, Everett  
Foster, Keith  
Fowler, Bernice, 2, 41, 58, 55,  
61  
Fox, Emogene, 44  
Fox, Robert, 45  
Foyst, Joe, End Page, 67, 55  
Frampton, James, 42  
Franklin, Marjorie, 82  
Frary, Marvin, 10, 61, 39, 59  
Franklin, Ceila  
Frantz, Bob  
Frazier, Dorothy, 31  
French, Arthur  
French, Nancy, 82  
French, Walter  
Frost, Ray, 46, 53  
Frost, Ruth, 15, 40  
Fry, Edward, 12  
Fuller, Hobert, 42  
Fulton, Robert, 12, 31  
Funkhouser, Edith  
Funkhouser, Leanna, 59  
Furbee, Don, 31, 65  
Furbee, Dorothy, 61, 66, 42, 59  
Furbee, Sarah Lee, 31, 50  
Furbee, Russell, 73, 53

## G

Garner, Nida, 43, 65  
Garnett, Donna, 82  
Garr, Betty, 31  
Garvey, Rosemary, 26, 31, 52,  
55, 62, 83  
Gauchet, Barbara, 56, 82, 83  
Gauchet, Mary E., 61, 67, 42,  
65, 83  
Gates, Robert, 55  
George, Dick, 73, 53  
Gernstein, Gerald, 12, 52, 73, 59,  
42  
Gilbreath, Gladys, 43  
Glad, Wayne, 11, 39, 59  
Glynn, Mary Agnes, 82  
Goar, Janis, End Page, 61, 66,  
40, 65  
Goar, Kathryn, 31, End Page, 55,  
66, 67  
Goar, Mary Juanita, 31, 56  
Goar, Ruth Ann, 46  
Godfrey, Robert  
Goin, Carl  
Goin, Wilbur, 11  
Gold, Beulah, 82

Gooch, Evelyn, 43, 65  
Gordon, Donna, 43  
Gordon, Kathryn, 15  
Gordon, Maxine  
Gorman, Douglas  
Graham, Edwin, 56  
Grady, Amelia, 43  
Gray, Jay  
Green, Charles D., 43, 53  
Green, Charles M.  
Green, Dorothy, 43  
Green, Mary, 43  
Greenstreet, Mr., 16, 20, 15  
Greer, Betty, 43  
Gregory, Gale, 32, 11  
Gregory, Willard, 32, 11  
Griffin, Charlene, 46  
Griffin, Robert, 32, 50, 52, 61  
Griffin, Donna, 43  
Gross, Mr., 22  
Groce, Mary E., 50  
Groves, Verlin, 59, 44  
Grubbs, Erma, 44, 83  
Grundens, Danny, 73, 53  
Guffey, Kenneth, 45  
Guffey, Ralph  
Guffey, Ruth  
Guiling, Ernest, End Page, 32, 66,  
67, 47  
Gwinn, Vernon, 10

## H

Habegger, Gerald  
Habegger, Glendon  
Hackleman, Buddy, 48, 43, 55,  
56  
Hagerman, Beulah, 59, 43  
Hagerman, Frank, 32, 61  
Hale, Jack  
Hale, Richard  
Halfacre, Nevada, 55, 40  
Hall, Margaret R., 61, 56, 46,  
83  
Hall, Ted, 32, 27, 52  
Hammond, Gene, 43  
Hammond, William  
Hanning, Helen, 40  
Harding, Bill, End Page, 61, 66,  
67, 40, 65  
Harding, Stanley, 45, 65  
Harding, Norman, 46  
Harrington, Miss, 16, 20, 15, 82  
Harlan, Jean, 32, 56, 57, 65  
Harlan, Martin, End Page, 32, 61,  
67, 65  
Harmon, Cecil, 40  
Harp, Charles, 32  
Harris, Jenalee, 46, 56, 82  
Harris, Louise, 59, 43  
Harshbarger, Helena, 43, 65  
Harshey, James  
Harshey, Joe, 2, 43  
Harter, Virginia, 12, 43  
Harvey, June, 46  
Hastings, Charlene, 59, 46, 82  
Hayes, Franklin, 43, 46  
Haynes, Billy  
Haynes, Rosetta, 46, 82  
Heck, Bill, 59  
Heck, Jean  
Heck, Phyllis, 32, 61, 59  
Hedrick, Delbert, 42  
Hedrick, Nellie, 61, 59  
Heilman, Philip, 43, 65  
Heinz, Albert, 52  
Helms, Bobby, 73, 46, 53  
Helms, Roy, 6, 52, 40, 56, 57  
Hendricks, Betty, 12, 61, 43, 65  
Hiatt, Betty Jane, 46, 82  
Hiatt, Mary Catherine, 32, 52, 62  
Hickman, Margaret, 43, 82  
Hick, Bill, 43  
Hicks, Jean, 2, 10, 52, 55, 40  
Higgs, Dorothy, 67, 45  
Higgs, Martha, 43  
Higgs, Robert, 2, 40  
Hill, Herman, 46  
Himes, Betty Lou, 32, 26, 52  
Hiner, Fred, 42  
Hiner, John, 46  
Hiner, Virginia, 59, 46, 56  
Hodgins, Doris, 45, 65  
Hodgins, Iris, 43  
Hodgins, Ralph, 59, 46  
Hodson, Miss F., 16, 23, 15  
Hodson, Mr. I., 16, 6, 22, 15,  
61, 59

Hodson, Miss M., 23, 59  
Hoff, Gloria  
Hogue, Mary Jane, 61, 59, 43  
Hogue, Martha Lee, 32, 26, 52,  
66, 59, 62  
Holcomb, Ralph, 43  
Hole, Alice, 46, 82  
Holloway, Barbara, 45, 65  
Holloway, Bill, 52, 40  
Holloway, Howard, 2, 12, 52, 67  
Holloway, Ladonna, End Page, 61,  
67, 43  
Holt, Donna, 46  
Holtzell, Phyllis, 45, 82  
House, Daine, 45  
Howard, Ruth, 50, 61, 43  
Howard, Virginia, 40, 59, 65  
Howren, James, 48, 40, 59  
Howren, John, 59, 43  
Hubbard, Robert, 32, 59  
Huckelby, Wilma, 32, 59, 82, 83  
Hudson, Charles, 52, 73, 42, 75,  
80  
Hudson, Helen, 15, 40, 82  
Hudson, Ida Mae, 8, 32, 24, 26,  
52, 55, 56, 59, 62  
Hudson, Martha, 40, 82, 83  
Hudson, Nancy, 59, 43, 65  
Hudson, Peggy, 65  
Huffman, Sattre, End Page, 66,  
67, 59, 46, 65  
Hughes, Ben, 45  
Hull, Betty, End Page, 61, 66,  
67, 56, 47, 65  
Hunnicut, James, 52, 40  
Huse, Paul Franklin, 46, 50  
Hutchens, Jimmy, End Page, 67,  
46, 50, 65  
Hutchins, Virginia, 7, 45, 65  
Hutson, Everett, 32, 12  
Hutson, Martha, 43

## I

Ingersoll, Bill, 48, 59, 43, 46  
Ingersoll, Dick, 10, 40, 56  
Ingersoll, Jack, 59  
Ireland, Tommy, 12, 46, 73, 53  
Ivey, Dorothy, 46  
Ivey, Ruth, 32

## J

Jackson, Junior, 32, 12  
Jackson, Helen, 61, 40, 56  
Jackson, Rosemary, 2, 43  
Jackson, Virginia, 45  
Jacoby, Betty, 33, 27, 52, 59  
Jarvis, Roy  
Jay, Wiley, 46  
Jenkins, Eileen, 45, 65, 82  
Jessup, Alice, 50, 43, 61, 56  
Johnson, Barbara, 46  
Johnson, Betty, 12, 33, 83  
Johnson, Dickie, 46  
Johnson, Richard, 67, 46  
Jolley, Mary, 46  
Jolley, Rudolph, 73, 40, 59, 75,  
65  
Jones, Anna Mae  
Jones, Charlotte, 46, 50  
Jones, Don, 43  
Jones, Edith, 46  
Jones, Fred  
Jones, Gae, 2, 11, 43, 65  
Jones, John, 45, 53  
Jordan, Barbara, End Page, 52,  
67, 40, 83  
Jordan, Ruth Ann, End Page, 66,  
59, 46, 65, 83  
Justice, Mark, 73, 43

## K

Kalk, Eva, 8, 37, 33, 52, 67, 56,  
83  
Kalk, Mary, 6, 50, 46, 82  
Kaye, Barbara, 12, 2, 14, 52, 63,  
40, 65  
Keesling, Roscoe, 73, 46  
Keever, June, 43  
Keith, Johnny, 37, 33, 65  
Keith, Junior, 40, 65  
Kellam, James Robert, 37, 33  
Keller, Beverly Jane, 61, 45, 65  
Kemp, Evelyn, 43  
Kendall, Mrs., 22  
Kendall, Bobby, 52, 43, 56

Kendall, Emma, 43, 56  
Kendall, Viola, 46  
Kennedy, Evelyn, 37, 33, 55  
Kennedy, Janet, 45, 65  
Kennedy, John, 40  
Kennedy, Ollie  
Kennedy, Patsy, 59, 43, 58  
Kennedy, Paul  
Kennedy, Violet, 40  
Kennedy, Willard, 45  
Kennedy, Wilma  
Kepner, Sam, 45, 53  
Kern, Alfred, 43  
King, Helen, 46, 82  
King, Mary, 33, 14, 26, 82  
Kinsey, Joseph  
Kinsey, Richard, 52, 71, 40, 81  
Kinsinger, James, 59  
Kirby, Bill, 73, 46, 53  
Kirby, Robert, 52, 40, 65  
Kirk, Mrs., 16, 6, 23, 15  
Kirkwood, Mary R., 59, 43, 65  
Kleyla, William, 2, 66, 67, 65  
Klipsch, Keith, 52, 43, 59  
Klotsch, George, 10, 52, 55, 43  
Klotsch, Gertrude, 33, 13, 54, 83  
Knight, Mary Louise, 65  
Knollman, Ruth, 52, 40, 56  
Koger, Emogene, 59, 43  
Kuhn, Arthur

## L

Lake, Bill, End Page, 61, 63, 67,  
47, 65  
Land, Bill, 45  
Lannerd, Howard, 33  
Larrimore, Naomi, 82  
Larson, John, 46  
Lassen, Dallas, 46  
Latham, Charles, 33, 59  
Laughlin, Clara, 45  
Lawson, Aurita, 44  
Lawson, Eleanor, 40  
Lawson, Mr. Randall, 20, 70, 73,  
81  
Leakey, Miss, 16, 13, 21, 15  
Leakey, Bruce, 33, 52, 54, 59  
Ledbetter, Grover, 33, 59, 12  
Lee, Bobby, 45, 46  
Lee, Edwin, 10, 52, 61, 40  
Lee, James, 46, 53  
Lee, James B., 52, 73, 59, 43, 75,  
80  
Lee, Max, 46  
Lee, Virginia, 6, 8, 33, 26, 50,  
52, 54, 62, 57  
Leffler, Jacques, 61, 40  
Leonard, Anita, 46, 82  
Leslie, Mr., 20  
Lester, Estelle, 56  
Lester, Thomas, 52, 55, 71, 73,  
40, 59, 75  
Levi, Martha, 46  
Lewis, Paul R., 6, 33, 26, 52,  
54, 61, 71, 73, 75, 84  
Lewman, Ruth, 46  
Lindly, Jay, 46  
Lineback, Jean, End Page, 67, 45,  
59, 65  
Lineberry, Dick, End Page, 14,  
66, 67, 46, 53, 65  
Lineberry, Ernest, 63, 44  
Lines, Patty, 46  
Lister, Betty Jane, 46  
Locker, Max, 63, 53  
Lockridge, June, 15, 40, 50  
Lockridge, Ladonna, 46, 50  
Long, Jean, 59, 43, 65  
Long, Susan, 6, 33, 26, 27, 52,  
54, 56, 62, 83, 48  
Longwith, Bob, 59, 12, 46, 80,  
53, 65  
Lorton, Leatha, 55, 40  
Lorton, Martha, 46  
Loveless, Denver, 46  
Lowery, Barbara, 43, 82  
Lowder, Eugene, End Page  
Lucas, Lois  
Ludy, Sarah, 43, 56, 82  
Luellen, Betty, 50, 46  
Luellen, Robert, 33, 52, 40  
Luke, James  
Luke, Jayne, 33  
Lunsford, James, 10, 40  
Lynch, Essie Fay, 46



## Mc

McClain, Maxine  
McConnell, Raymond, 46  
McCormack, Bill, 41  
McDaniel, Harold, 41, 50  
MacDonald, Rody, 33, 52, 54, 59  
McDonell, Dick, 6, 33, 26, 52, 54, 55, 71, 73, 75  
McDowell, Warren, 41, 12  
McElhaney, Mary, 41  
McFarland, Joanna, 41, 82  
McGahan, Jessie Opal, 45, 50  
McGary, Nila  
McGee, Rex, 45  
McGill, Deanne, 33, 12  
McGill, Lelah, 45  
McGinnis, Deloris, 45  
McGinnis, Earl, Jr.  
McGrady, James, 6, 8, 33, 14, 52, 55  
McGrady, John, 34, 14, 54, 55  
McKecknie, Jean, 45, 82  
McKnight, Harold  
McKnight, Howard, 41  
McLeod, Mr., 20  
McMillan, Charles, 52, 61, 71, 40, 76, 77, 79, 78  
McMullen, Rosemary, 34, 2, 26, 61, 65  
McNaughton, Kay, 14, 50, 52, 41  
McQuerry, Rosamond, 46  
McRoberts, Kenneth, 46  
McSherry, Franklin  
McShurley, Max, 12, 7, 52, 41  
McWhorter, Odell, 8, 34, 61

## M

Macer, Leland, 45, 53, 59  
Maddy, Dorothy, 34, 50  
Mahoney, Martha, 39  
Mahoney, Nellie, 45, 58  
Main, Barbara, 26, 34, 62, 56, 57  
Malloy, Jack  
Manifold, Miss, 21  
Manning, Lillian, 56, 41  
Maple, Martha Rose, 45  
Marcum, Carl  
Marcum, Roy, 41  
Marks, Estella, 41  
Marks, Margaret, 45, 50  
Marks, Rosellen, 45, 65  
Marshall, James, 45  
Martin, Ellen  
Martin, Elva, 34, 39  
Martin, Janet, 34, 26, 59, 47  
Martin, Rex, 41, 59  
Mastin, Floyd, 10, 61, 40, 59  
Mastin, John, 73, 45, 75  
Mathes, Jean, 28  
Mathews, Robert, 45, 53  
Mattox, Ruth, 40  
May, Marjorie, 15, 45  
Meese, Robert, 40  
Meggs, Elsie, 34, 59  
Meggs, Francis, 82  
Meggs, Ruth, 45, 82  
Melville, Miss, 84  
Mendenhall, Freda, End Page, 67, 41, 65  
Messick, Sarah, 41  
Myers, Mr., 16, 20, 59  
Miles, Philip, 41  
Miles, Richard, 46  
Miller, Margaret  
Miller, Marjorie, 14, 7, 41, 82, 47, 65, 82  
Miller, Patricia, 45  
Miller, Paul, 40  
Miller, Roseanna, 41  
Miller, Sally, 39  
Millis, Howard, 45  
Millikan, Mary, 46  
Millikan, Rilla, 34, 10, 52, 61, 56, 65, 83  
Millon, Maxine  
Mitlin, Howard, 45  
Mills, Paul, 31, 52, 66, 67, 47, 65  
Minyard, James, 45  
Misener, George, 34, 10, 59, 12  
Mitchell, Mary, 39, 48, 82, 83  
Mitchell, Rosemary, 15, 31, 83  
Mitchner, Raymond, End Page, 67  
Modlin, Charles  
Modlin, Twila, 40  
Mogle, Glen

Moistener, Geneva, 41  
Moles, Marie, 41  
Moles, Wanda, 71, 45  
Montgomery, Donna, 45  
Moore, Barbara, 12, 2, 39, 63, 56, 65  
Moore, Lova Mae, End Page, 66, 67, 41, 65  
Morgan, Jean, 7, 61, 41, 82  
Morgan, John P., 34, 61, 59, 65  
Morris, Dorothy, 8, 34  
Morris, Phyllis, End Page, 67, 41, 65  
Morris, Timmy, 34, 7, 27, 50, 52  
Moulden, Colleen, 67, 41, 65  
Moystner, Howard, 41, 54, 61, 53, 65  
Mukes, Betty, 39  
Mullen, Billy, 40, 59  
Murnan, Chalmur, 34, 71  
Murphy, Dick, 73, 41, 75, 81

## N

Neal, Beulah, 2, 41  
Neal, Daisy, 61, 82  
Neal, James  
Neal, Mary Alice, 45, 50  
Neel, Arnold  
Neff, Robert, 46  
Nemeth, Walter, 59, 40  
Nemeth, Oscar, 34  
New, Christine, 41, 82  
New, Everett, 34, 71, 73, 41, 75  
New, Hershell, 71, 41, 50  
New, Ray, 45  
Newcumer, Margaret, 45, 82  
Newman, Ruth, 7, 40, 61  
Nibarger, Ruth  
Nichols, Bobby, 53  
Nichols, C. W., 40, 61, 81  
Nielander, Martha, 34, 26, 52, 61, 63, 57, 65, 83  
Niles, Bill, 73, 53  
Nolley, Joan, 45, 65, 82  
Norris, Donald, 40  
Nutt, Miss, 34  
Nutt, Phyllis, End Page, 34, 50, 48, 52, 66, 67, 47, 84, 65

## O

Oliphant, Geneva, 22  
O'Rear, Dawna, 40, 52, 56  
O'Rear, Dorothea, 61, 59, 65, 82  
O'Rear, Glenna, 40, 50, 52, 55  
Orr, Miss, 16, 13, 23  
Osborn, Alice, 45, 59  
Osborne, Charles, 34, 59  
Osborn, Pauline, 41  
Overman, Martha, 45, 59  
Owens, James  
Owens, Annabelle, 34, 61, 56  
Owens, Robert, 50  
Oxley, Franklin

## P

Padgett, Bill, 8, 35, 12  
Padgett, Don, 35  
Paine, Roger  
Parker, George, 45  
Parsons, Mr., 53  
Patterson, Maxine, 2, 61, 44  
Patterson, Patsy, 6, 7, 26, 35, 52, 54, 66, 67, 56, 65, 57  
Paul, John, 12, 52, 40  
Paul, Pauline  
Payne, Jack, End Page, 48, 52, 66, 47, 65, 67, 41  
Payne, J. H., 45  
Pea, Patricia, 45, 59, 65  
Pearson, Gloria, 66, 45, 59, 65  
Peckinpaugh, Jack, 73, 45, 53  
Pelfrey, Pauline, 40  
Pfenninger, Frank, 11, 59  
Pfenninger, Leona, 43, 82  
Pfenninger, Russell, 43  
Phares, Ruth, 43  
Phillips, Wanda, 59, 44, 82  
Phipps, Christine, 45, 82  
Pierce, Homer  
Pinnick, Miss, 16, 22, 15  
Platts, Bob, 35, 71, 73, 59, 75  
Pogue, Miss, 16, 23, 15, 59  
Poindexter, Dorothy, 44  
Polk, Betty, 45, 59

Polk, Robert, 73, 41, 75  
Pollit, Francis, 35, 13, 10, 59  
Pollit, Wilma, 10, 43  
Polston, Billy  
Pope, Truman, 45, 12  
Poppelwell, Burneda, 41  
Porter, Alice, 35, 13, 83  
Poppelwell, Charles, 35, 59  
Porter, Raymond, 45, 53  
Poston, Billy, 46  
Powers, Charles, 45  
Powers, Paul, 50  
Poynter, Ethel, 45, 82  
Prater, Clifford  
Prater, Eulis  
Prater, Kenneth  
Prater, Regina, 45  
Preble, Bobby, 73, 45  
Pugh, Mary Alice, 59, 41  
Purvis, Martha, 44, 82

## R

Rains, Bill  
Rains, Mildred, 41  
Rains, Nora  
Ramsey, Eleanor, End Page, 35, 52, 67, 62, 56, 57, 83  
Ramsey, Joseph, End Page, 45, 59, 65  
Ratcliff, Miss, 21, 62  
Ratcliff, Eugene, 45  
Ratcliff, Gerald, 59  
Ratcliff, Louise, 35, 24, 26, 52, 61, 65  
Rawlings, Bill, 59  
Ray, Miss, 6, 20  
Razor, Billy, 12  
Razor, Glenn, 45  
Razor, Merle, 40  
Reavis, Ethel, 59, 12, 43, 63  
Reavis, George, 12, 43, 63, 65  
Reckner, Jean  
Redelman, Mary, 59, 43, 65  
Reece, Bonnie, 15, 39  
Reece, Evelyn May  
Rees, Betty, 35, 44  
Reneau, Clarice, 59, 41  
Reynolds, Doris, 41, 50  
Rhodehamel, Leo, 59, 11  
Rhodehamel, Virginia, 45, 82  
Rice, Phyllis Jean, 35, 55, 82  
Rice, Victor, 40, 59  
Richter, Mary L., 45, 56, 82  
Rifner, Agnes, 50, 82, 44  
Rifner, Mary, 35, 26, 48, 50, 82  
Rinard, Faith, 15, 41  
Roach, Ted, 59, 43  
Robbins, Emerson  
Roberts, Joan, 43  
Roberts, Norman, 46  
Roberts, Ray  
Robinson, Charles, 35, 59  
Robinson, Christine, 45, 56  
Robinson, Sonny, 45  
Rockhill, Mr., 16, 20, 15  
Rogers, Eugene  
Rogers, Mr. James, 8, 23, 70  
Rogers, Mrs., 23, 24  
Roth, Toby, 14, 13, 82, 44, 65  
Rouse, Elizabeth, 66, 41  
Rouse, Irene  
Rouse, Mary Ann, 43  
Rucker, Miss, 16, 11, 23, 15  
Runyan, Miss, 16, 23, 15  
Ryan, Donna, 46  
Ryan, Jean  
Ryan, Sherwood, End Page, 40, 52, 67, 47, 64

## S

Saathoff, Dorothy, 55, 41  
Salyer, Madge  
Samplly, Betty  
Sampley, Betty Ruth, 82  
Sampley, Mary  
Sampley, Rose Marie, 43  
Sanders, Barbara  
Sanders, Marjorie, 2, 41  
Sanders, Chester  
Sanderson, Mable, End Page, 67, 82, 44  
Sanderson, Ralph, End Page, 61, 66, 67, 40  
Saul, Henry  
Saunders, Marjorie, 44  
Schell, Jeanne, 50

Schetgen, Agnes, 59, 41  
Schofield, Clarence, 45  
Schuffman, Joe  
Scott, James, 40, 55, 59, 65  
Scott, Norma Jean, 40, 52, 63, 65, 83  
Scroggin, Betty, 40  
Sears, Betty, 35  
Sears, Rachel, 35, 39  
Selvey, Gladys  
Shedrick, Donald, 45  
Shafer, Bob, 10, 40, 61, 63, 65, 59  
Shafer, Lloyd, 8, 35, 71, 76, 78, 79, 7  
Shanks, Mary Ellen, 46  
Shapiro, Edythe, 52, 61, 41  
Shapiro, Morton, 45, 59  
Sharp, Jack, 45  
Sharp, Martha, 50, 52, 55, 41  
Sharp, Mary, 52, 61, 41  
Shaw, Dorothy, 45  
Shaw, James, 43

## S

Sheffield, Emory, 46, 53  
Shell, Mary Lee  
Shelly, Bill, 73, 59, 41  
Shelly, Herbert, 10, 40, 54, 61, 63, 65  
Shelley, Kenneth, 45  
Shelton, Eva, 46  
Sheppard, Ada, 35, 82  
Sheppard, Gene, 39, 13  
Sheppard, Rex  
Sherry, Robert, 40, 52, 55  
Shoemaker, Virginia, 55, 82  
Shultz, Lois, 35, 24, 26, 50, 52, 62, 65  
Shumake, Geneva, 45  
Sidwell, Don, 35, 2, 71, 59, 7, 55  
Sidwell, Eddie, 35, 71, 73, 7, 26, 75, 76, 78, 79  
Sidwell, Norma, 44, 82  
Singleton, Mildred J.  
Sipe, Kenneth, End Page, 67, 43  
Sisk, Max, 50  
Skaggs, Beverly, 59, 44, 82  
Slettvet, Juanita  
Smith, Mrs., 16, 23, 15  
Smith, Miss, 16, 22, 15, 61  
Smith, Betty, 44  
Smith, Charlotte  
Smith, David  
Smith, Dick  
Smith, Erlene, 40, 55, 67, 65  
Smith, Eloise, 40  
Smith, Evelyn, 40, 82  
Smith, Freda, 59, 44, 58  
Smith, Gene, End Page, 66, 67, 43, 47  
Smith, Geneta, 45  
Smith, Helen, 39  
Smith, James, 45  
Smith, John B., Jr.,  
Smith, Nadine, 43  
Smith, Phyllis, 46  
Smith, Randall, 36, 52, 56, 57, 47  
Smith, Richard, 59  
Smith, Shermalee, 41  
Smith, Thelma, 40  
Smith, Tilmond, 11, 46  
Smith, Willard  
Snedigar, Ernest  
Snider, Herbert  
Snodgrass, James, 43  
Solomon, Philip, 50  
Southerland, Eva, 43  
Southerland, Georgia, 43  
Southwood, Bernice, 43  
Spannuth, Annabelle, 45, 82  
Spear, Jimmy, 73  
Spears, Betty, 2  
Spears, Earl  
Spencer, Donald, 59, 43  
Spears, Richard  
Spera, Jim, 45, 53  
Spicer, Paul, 40, 59, 11  
Stairs, Dale, End Page, 67, 43  
Stairs, Wilbur, 36, End Page, 10, 61, 66, 67, 65  
Stanley, Harold, 2, 39, 52, 73, 75, 80  
Stearns, Henry, 53  
Stearns, Mary, 41, 83



Stephens, Artie June, 36  
 Stephens, Louella, End Page, 66,  
 67, 45, 59, 65  
 Stephenson, Mary Ellen, 36, 2,  
 55  
 Stevens, Paul, 40, 52  
 Steward, Ben E.  
 Stewart, Marjorie, 12, 40, 61, 66,  
 62, 65  
 Stiggelman, Beverly  
 Stillwell, Dolly, 45, 56  
 Stillwell, Elizabeth, 36, 39  
 Stillwell, Evelyn  
 Stillwell, John, 71, 41, 76, 77,  
 78, 79  
 Stinson, Martha, 45, 56, 82  
 Stinson, Nettie  
 Stocks, Jack, 8, 36  
 Stokes, Robert, 56  
 Stonerock, Jimmy, 52, 43  
 Stoops, Dale, 12, 59  
 Stoops, Don, 36, 26, 81  
 Stoots, Beatrice, 15  
 Stotelmeyer, George  
 Stout, Frank, End Page, 66, 67,  
 43  
 Strong, Gene, 40, 59, 65  
 Surber, Marie, 45  
 Summers, Roy  
 Supinger, Charlotte, 61, 43  
 Sutherland, Emma, 45  
 Sutherland, Harry, 41  
 Sutton, Paul  
 Sutton, Robert, 43  
 Swazy, Mrs, 22  
 Sweigart, George, 65  
 Sweigart, John  
 Sweigart, Mary Ann, 2, 67, 43  
 Swim, Doris, 45, 82  
 Swindell, Bonnie, 43  
 Symons, Maryellen, 6, 8, 36, 26,  
 52, 54, 62

## T

Tapscott, Ruth, 50, 44, 59  
 Tarr, Donna, 44  
 Tarr, Martha, 45, 46  
 Tatom, Betty, 45  
 Taylor, Dale, 80  
 Taylor, Dorothy  
 Taylor, Gerald  
 Teal, Fred, 45  
 Teetor, Suzanne, End Page, 66,  
 45, 59, 65, 83  
 Thalls, Georgetta, 46  
 Tholls, Georgetta  
 Thom, Martha, 44  
 Thomas, Adonis, 67, 44

Thomas, Donald, 46  
 Thompson, Buddy, 41, 52, 66,  
 67, 47, 65  
 Thompson, Earl, 44  
 Thompson, Ernest, 71, 73, 75  
 Thompson, Francis, 59, 11  
 Thompson, Gordon, 44  
 Thompson, Guy  
 Thompson, Jeanette, 45, 59, 83  
 Thompson, Lorenzo, 44  
 Thompson, Lucille, 45, 82  
 Thompson, Patsy, 67, 43, 65  
 Thompson, Yettiva, 46  
 Thrasher, Lillian  
 Thurman, Betty, 45  
 Todd, Patricia, 45, 59  
 Todd, Vianna, 41  
 Tompkins, Irene, 41, 56  
 Torgrimson, Mary, 22  
 Tout, Barbara, 45  
 Tower, Donna, 12, 56  
 Townsend, Mary Alice, 10, 41,  
 50, 52, 63, 65, 83  
 Trieschman, Frederick, 45  
 Tout, Arlis, Jr., 46  
 Troxell, Elmer  
 Tucker, Johnny  
 Troxel, Johnny, 46  
 Tucker, Pauline, 44  
 Tulley, Dick, 73, 45, 53  
 Tungate, Edna, 45  
 Tungate, Forrest, 39, 59, 11, 50  
 Turner, Ada, 45, 56, 82  
 Turner, Bernice, 36  
 Turner, Ethel, 43  
 Turner, Jean, 36  
 Turner, Leon, 44  
 Turner, Opal, 50, 82  
 Turner, Wilma, 39  
 Turpin, Gloria, 45  
 Turpin, Harriett, 7, 39, 61, 47  
 Tutterow, Ruth, 36  
 Tyler, Joe, 36, 59, 76, 56, 57

## U

Underwood, Thomas, 73, 46  
 Upchurch, Eugene  
 Upchurch, Lelah, 45, 56, 82  
 Utt, Ruth, 12, 41, 82

## V

Valentine, Mr., 18  
 Vancamp, Lewis, 36, 56  
 Vangordon, Evelyn, 41  
 Vanhooose, Dale, 36  
 Vanhooose, Pricilla, 41, 61  
 Vanmatre, James, 59, 44

Vannatta, Geraldine, 45, 56, 82  
 VanZant, Robert, 29, 39, 59  
 Vaughn, James, 50  
 Vaught, Maxine, 36,  
 Vaught, William, 41  
 Veach, Wilbur, 41, 61, 76, 78,  
 79  
 Vickers, Mr., 10, 20, 15  
 Vincent, Rual, 45  
 Vinson, Thomas  
 Vincent, Norman, 73, 75, 80  
 Vivian, Bob, 36, 52, 59  
 Vogel, Mr., 19  
 Vogel, Jimmy, 52, 59, 80, 44

## W

Waggoner, Tom, 73, 45  
 Wainscott, Patricia, 45  
 Walden, Francis  
 Walden, Mrs., 22  
 Walden, Betty, 45  
 Walker, Barbara, 45  
 Walker, Betty, 45, 82  
 Wallen, Betty, 82  
 Wallen, Herschel, 45  
 Wallen, John, 59, 44  
 Walls, Edward, 52, 44  
 Waln, Adelia, 61, 45  
 Waln, Francis, 82  
 Waln, Kathryn, 36  
 Waln, Madonna, 45  
 Waltz, Thelma, 46  
 Waltz, Violet  
 Wantz, Delma, 44  
 Ward, Edna, 46  
 Ward, Enzie  
 Ward, Milo, 44  
 Ward, Myrtle, 44  
 Wardlow, Don, 36, 66, 59, 12  
 Wardlow, Macy, 45, 65  
 Warner, George, 41, 63, 56, 57  
 Warnock, Don, 44  
 Watt, Lena, 41, 82  
 Weaver, Richard, 45  
 Webster, Paul, 36  
 Wedell, Dorothy, 45, 59, 82  
 Weintraut, Dale, 52  
 Weintraut, Floyd, 2, 52  
 Whalen, John, 46  
 Whalen, Milton, Jr., End Page,  
 41, 61, 67, 47  
 White, Bill, 73, 45, 53  
 White, Emerson  
 White, Philip, 50, 52, 76, 78,  
 79, 44  
 White, Thomas, 44  
 White, Wesley, 73

Whitesell, John  
 Whitney, Phyllis, 45  
 Whitten, Betty, 46  
 Whitton, Martha  
 Wickliff, Bessie, 41  
 Wickliff, Byron, 52, 44  
 Wiley, Jay  
 Wilkinson, Darlene, 45  
 Wilkinson, Hazel, 45, 82  
 Wilkinson, Margaret, 45  
 Wilkinson, Melvin, 57, 59, 62  
 Williams, Bill, 45  
 Williams, Ruth, End Page, 38, 41,  
 50, 54, 66, 67, 47  
 Williams, Wauneta, 61, 44, 65  
 Wilson, Alma, 45, 82  
 Wilson, Jerry, 45, 56, 65  
 Wilson, Louise, 59, 44  
 Wilt, Charles, 8, 37, 52  
 Winkhart, Eleanor, 44  
 Winkhart, Marjorie, 59, 44  
 Winning, Marilyn, End Page, 67,  
 44, 65  
 Winters, Darrell, 41, 65  
 Winter, Delores, 59, 50, 58  
 Wise, Alice Ann, 61, 59, 41  
 Wiswell, Jane, 40, 37, 61, 83  
 Witham, Louise, 44  
 Withers, Christine, 41  
 Witt, Gene, 10, 41, 50, 52, 76,  
 78, 79  
 Wolf, Marion  
 Wolf, Perry, 73  
 Wood, Erma, 66, 59, 44, 65  
 Wood, Robert 41  
 Wray, Harold  
 Wright, Billie Joe, 45, 59  
 Wright, George, 46, 53  
 Wright, Miss, 16, 23, 15, 50  
 Wright, Jewell, 45, 65  
 Wrightsman, Jimmie, 46, 53

## Y

Yauky, Madonna, 22  
 Yelton, Fred, 14, 6, 50, 52, 59  
 York, Floyd, 45  
 York, Wendall, 73, 50  
 Yost, Barbara, 45, 82  
 Yost, Betty, 2, 61, 44, 65, 82  
 Young, David

## Z

Zeller, Betty, End Page, 66, 67,  
 82, 44, 65  
 Zerkle, Dorothy, 41







« « *The Class Of 1943 Present*



*New Castle High School*



*In Pictures And Story*



*In War - Time Formation » »*



